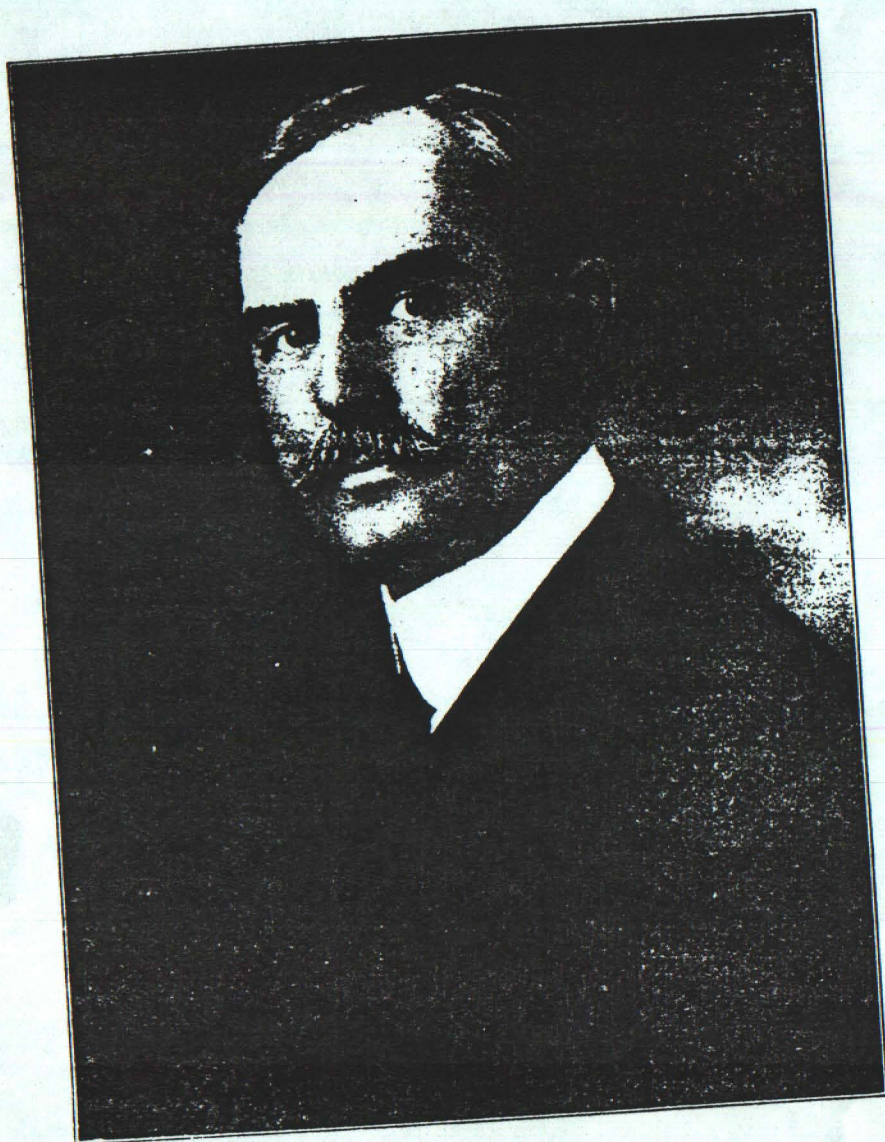


0480 0124



JOHN D. RYAN,

CHAIRMAN OF THE BOARD OF DIRECTORS OF THE ANACONDA COPPER MINING CO.,
WHOSE BUTTE MINES YIELD 10% OF THE WORLD'S COPPER SUPPLY.

INTERNATIONAL EDITION
THE MINES HANDBOOK
AN ENLARGEMENT OF
THE COPPER HANDBOOK
Founded by Horace J. Stevens, 1900

A MANUAL OF
THE MINING INDUSTRY OF THE WORLD

BY
WALTER HARVEY WEED, E.M.

Former Geologist in the U. S. Geological Survey, 1883-1906; Member
Institution of Mining and Metallurgy of America; Fellow
Geological Society of America; Author: Copper
Mines of the World; Geology of Butte,
Montana; Nature of Ore
Deposits, etc.

VOL. XIV
Supplementing Volumes I to XIII
Price \$15.00

34055
PUBLISHED BY
W. H. WEED
New York City
1920

(147)
Item 134

waste-filling system as the walls in the lower levels are insecure, caving in large masses, thus making the shrinkage system of stoping used above the 400' level, inadvisable in the lower workings.

Development: by shaft and winze, to depth of 2,000', with a total of 66,438' of workings. Exploration in 1916 indicated favorable conditions at depth and during the following year the sub-shaft was sunk from 1,600' to 1,900'. Work done during 1918 totaled 8,872', mainly on the 1,900' and 2,000'. Cross-cuts were driven on the 700 cutting the formation for 1,555' at right angles to the strike of the vein. Results at depth were not encouraging and management planned prospecting ground between upper levels in 1919.

A one-year lease from August, 1918, was procured on the holdings of the Monitor Belmont Mng. Co., at Belmont, which see. This was relinquished as no ore was found.

The 100-ton Churchill mill, now operated as a department of the Nevada Wonder, ran in 1918 on ore that averaged \$2.06 in gold and 13.20 oz. silver.

Production:

| | Tons | Ag. oz. | Au. oz. | Total Value | Av. Rec. % | Cost per ton | Oper. Profit Net per ton |
|-----------|--------|-----------|---------|-------------|------------|--------------|--------------------------|
| 1918..... | 49,710 | 657,815 | 5,108 | \$742,306 | 91.82 | \$10.09 | \$3.62 |
| 1917..... | 55,800 | 929,284 | 7,882 | 822,940 | 89.10 | 10.78 | 3.97 |
| 1916..... | 72,241 | 1,352,615 | 11,466 | 1,112,835 | 92.67 | 8.90 | 5.37 |

At the end of November, 1919, company ceased operations. Cash assets total about \$400,000.

NEVADA ZINC CO.

NEVADA

G. L. Bemis, Tobar, Elko county, Nev., gen. mgr., at last accounts. **Property:** the Pola Star group near Tobar, has a zinc-lead deposit, 40' wide and opened for 600' on surface. Ore said to average from 30-35% zinc and from 4-5% lead. Developed by tunnel and 500' shaft. Reported producing at the rate of 200 tons per month in 1917. No recent returns.

NEW BONANZA COMSTOCK MINES CO.

NEVADA

Incorporated December, 1919, in Nevada, by C. A. Garret, T. B. Gordon, Gurney Gordon, F. M. Kleppe, and O. R. Vaughn. Cap., \$75,000; 20c par. No information as to property obtainable.

NEW JERSEY MINES CO.

NEVADA

Officers: 628 Hudson St., Hoboken, N. J., and Goldfield, Nev. **Officers:** Henry V. Broeser, pres.; L. A. Opdyke, v. p.; J. H. Stegman, treas.; Geo. H. Snyder, sec., Jersey City; above, with 14 others form the directorate; Harry Ernest, mgr.

Inc. Jan. 15, 1912, in Nev. Cap., \$1,250,000; shares \$1 par; outstanding, 1,010,850 shares; assessable 1c per share per year. Registrar & Transfer Co., New York, registrar.

Treasurer's report for year ending March 31, 1917, shows receipts of \$18,017, which includes assessments, \$6,912, sale of shares, \$1,000, renewal of note, etc., \$4,997. Disbursements amounted to \$17,672, leaving balance on hand, \$346. There were only \$1,500 owing on the note. No later returns given out.

Property: 5 claims, 3 patented, 53 acres, several miles N. E. of Goldfield, said to show gold-silver ore.

Development: 507' shaft, with work done in 1916 on the 330' and 400' levels. Conditions remain as in 1916, showing ore, but not in commercial quantities. Idle.

NEW TUSCARORA MINING CO.

NEVADA

Address: Tuscarora, via Elko, Nev. **Officers:** W. J. Craig, pres.-mgr.; J. R. Austin, v. p.; W. J. Wolstenholme, sec.-treas., with E. L. Soule, H. S. Barnhart and P. D. Fenkell, directors.

Cap., \$50,000; shares 5c par; 500,000 issued.

Property: 4 claims in the old Tuscarora district, Elko county, Nev. **Development:** a tunnel (in 750', Nov., 1918) being driven to cut the vein. Shallow shafts said to show ore with high values in gold and silver.

NEW WILLARD GOLD MINES CO.

NEVADA

Address: E. E. Roberts, Lovelocks, Pershing county, Nev.

Officers: E. E. Roberts, pres.; with L. C. Deady and W. J. Beauchamp (mgr.), directors.

Property: 10 claims close to the Shepherder mine in the Loring district. Surface exposures said to be good.

NEW YERINGTON COPPER CO.

NEVADA

Company inactive and winding up its affairs, July, 1919. **Property** at Yerington, Lyon county, fully described, Volume XIII.

NICKLAS MINING CO.

NEVADA

Address: 11 Pine St., New York.

Officers: E. N. Breitung, pres.; A. S. Mitchell, v. p.; W. A. Hamilton, sec.-treas., with Max Breitung and H. B. Barling, directors. H. B. Menardi, supt.

Inc. Sept. 7, 1916, in Arizona. Cap., \$1,500,000; \$1 par; 1,300,000 issued. Stock stricken from New York Curb, Sept., 1919. **Bonds:** \$300,000, 6% 1st mortgage sinking fund, serial gold bonds, \$225,000 outstanding.

Annual report to December 31, 1918, shows: **Property** and development, \$1,655,333; equipment, \$25,624; cash, \$2,699.

Property: the Nicklas and Plumas mines in Galena district, 13 miles S. W. of Battle Mountain, Lander county. The Nicklas mine has a 1,300' tunnel, showing a quartz vein in grano-diorite, with value in gold and silver. The Plumas mine, purchased in 1917, is credited with a past production of \$6,000,000 in silver-lead ore. There is a 30-ton concentrator on the ground, and carload shipments of concentrates were made to Midvale smelter in 1919.

The Nevada Silverfields Co., was incorporated in 1918 to acquire and merge the holdings of the Nicklas Mining Co. and the Silverfield Mining Co., Ltd., a British corporation fully described Vol. XIII. The exchange privilege called for 5 shares of Nicklas for 1 share of Nevada Silverfields. The president, E. N. Breitung, announced, May 31, 1919, that sufficient stock had been transferred to give control to the new company. Joint operation of the holdings and the proposed erection of a 100-ton mill are given as the most promising feature of the reorganization. Is regarded as a sane mining promotion.

NIVLOC MINING CO.

NEVADA

Harry Stimler, mgr., Tonopah and Silverpeak, Nev. Operates the Stimler mine, 12 miles W. of Silverpeak, Esmeralda county, developed by 440' shaft, with good ore reported on the 200' level. A 520' drift was driven under contract in 1919.

NIXON-NEVADA MINING CO.

NEVADA

Offices: 50 Congress St., Boston, Mass.; Gazette Bldg., Reno, Nev., and 15 Broad St., New York.

Officers: P. S. Jones, pres.; J. F. McDonald and R. J. Jefferson, v. p.'s; W. E. Brown, treas.; S. A. Cunningham, asst. treas., with B. J. Dwyer, W. L. Rianhard, and G. H. Allen, directors; J. A. Straussman, sec. and asst. treas.; W. H. Butler, managing director, at last accounts.

Inc. 1915, in Maine. Cap., \$1,000,000; shares \$1 par; fully paid and non-assessable; all issued. Stock is listed on Boston and New York Curb; 250,000 shares underwritten at 40c in September, 1917.

Property: 840 acres in Hartlesville Township, known as the Granite Hill mine, 14 miles N. W. of Reno, and 50 acres at Big Mouth Canyon, 50 miles N. E. of Reno, Washoe county.

The Granite Mountain mine opens 2 veins of apparent diverging strike, both of which carry ore. No. 1 averages 1.8' wide in a shoot 190 to 200' long on the 200' level, and stoped for 45' up. At 300' there are 10 small shoots in a length of 300', whose ore extends up 80' above this level. No. 2 vein is 12" wide for a length of 110', and ore goes up 90' above the level.

Development: by shafts, with a total of 2,849' of workings, including 720' on the second and 2,039' on the third level.

Equipment: at the Granite Hill includes 100-h. p. semi-Diesel engine