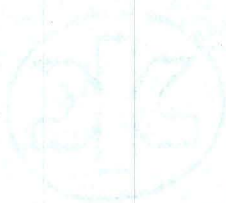


147

Item 84



Memorandum

52% COTTON FIBER

0480 0078

PRELIMINARY EXAMINATION
OF THE
PERSPIRATION AND APRIL CLAIMS
T 32 N, R 43 E, Sec. 31
LANDER COUNTY, NEVADA

PAN-NEVADA, INC.

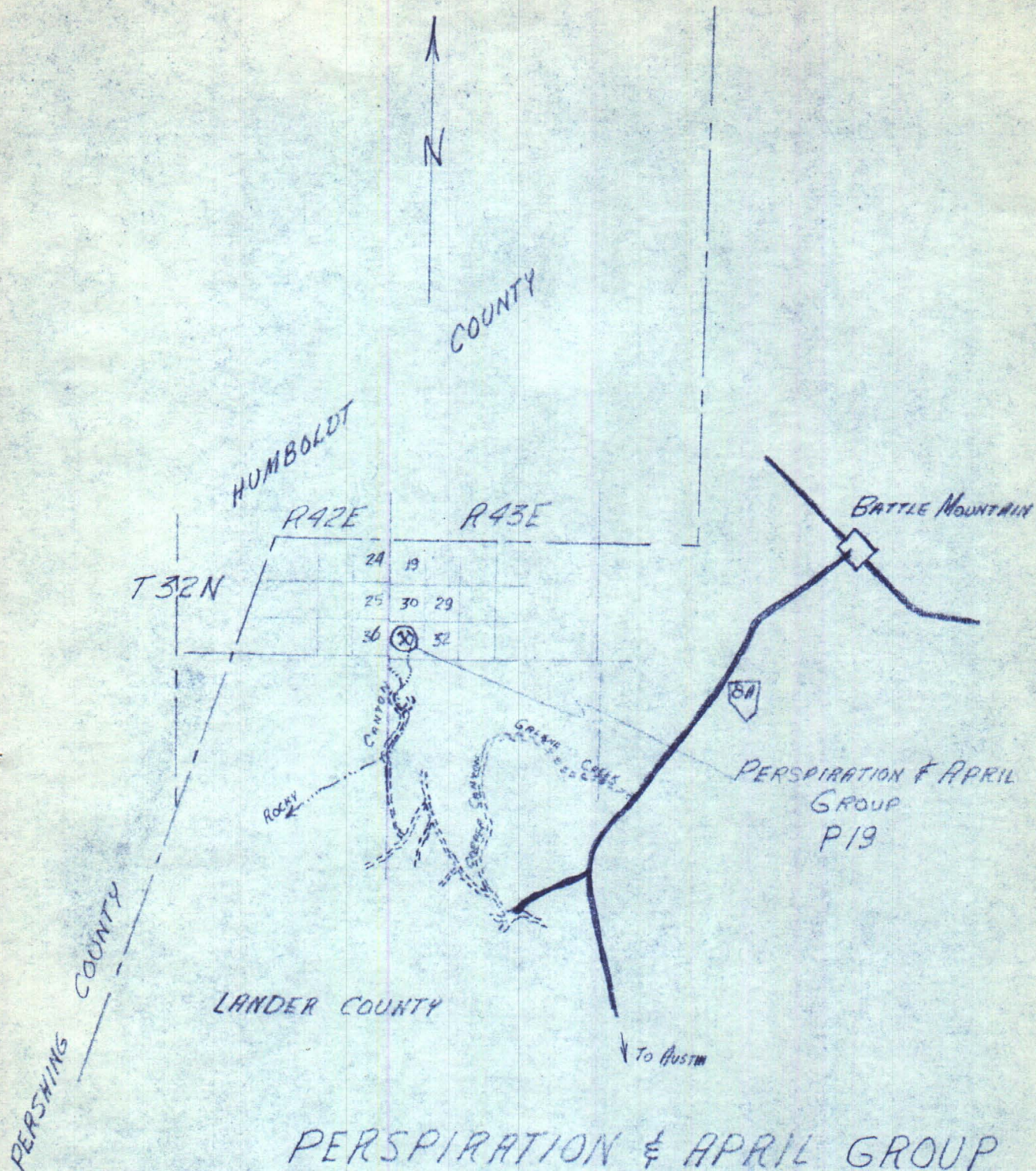
L. B. GOLDSMITH

J. K. DUFF

JUNE, 1968

TABLE OF CONTENTS

LOCATION MAP	i
INTRODUCTION	1
GENERAL GEOLOGY	1
ECONOMIC GEOLOGY	2
CONCLUSIONS AND RECOMMENDATIONS	2
BIBLIOGRAPHY	
APPENDIX (sample descriptions and assays)	
SAMPLE LOCATION MAP	Pocket inside back cover



PERSPIRATION & APRIL GROUP LOCATION MAP

T32N, R43E, SEC 31
MDBM
LANDER COUNTY
NEVADA

P19



INTRODUCTION

The property is located in T 32 N, R 43 E, Sec. 31, MDBM, Lander County, Nevada. Topographically it is situated at the extreme head of the west branch of the first split and the east branch of the second split of Rocky Canyon. A series of roads provide access to within two miles of the claims; a road for tracked vehicles extends another three-quarters of a mile; thence cow trails along the creek bed lead to the property, a climb on foot of about one and one-quarter hours. The group is composed of the "April", "Perspiration No. 1, 2, and 3" claims, of which the "Perspiration No. 3" claim was not found.

Preliminary investigation of the property was made on June 7, 8, 9, and 10, 1968, by J. K. Duff and L. B. Goldsmith.

Outcrop is sparse, the exposures being limited to pits, shafts, and adits along a N-S fault zone.

GENERAL GEOLOGY

The claims are underlain by interbedded argillites and cherts of the Pennsylvanian Pumpnickel Formation. A geological map was not produced because all of the rocks observed were of this assemblage. General strike is northerly, dipping 50° - 60° westerly.

The nearest intrusive is a Tertiary granodiorite plug about one-half mile to the northwest; this is the same body as mentioned in the "Blister" report.

A northward-trending reverse fault dipping 45° - 55° W crosses the area of the claims. It has a minimum dip-slip displacement of 4000'. The shearing at sample location No. 40 is probably associated with a northeast-trending normal fault zone. Three directions of fracturing were noted at sample location No. 46.

ECONOMIC GEOLOGY

Judging from the size of the waste dumps there is a total of about one thousand feet of workings on the property. There is no road to the claims so it is unlikely that an appreciable amount of material was removed for milling elsewhere.

Page B 83 of Professional Paper 459-B (see bibliography) contains a reference to the "Telluride Mine" in T 31 N, R 43 E, Sec. 6 in which free gold, silver minerals, and gold-silver-bismuth-tellurides were exposed in shallow adits and open cuts. This is believed to be one-half mile south of the Perspiration claims.

Assay results are not encouraging.

CONCLUSIONS AND RECOMMENDATIONS

Assessment work is completed for 1967-68. Expenditures include:

(1) Four days property examination	\$200.00
(2) One day report preparation, LBG	25.00
(3) Assays	<u>231.75</u>
TOTAL	\$456.75

Proof of Labor for a value of four hundred dollars was recorded in Austin on June 18, 1968.

The property may be retained in good standing until next year. If a new lease were to be renegotiated this property could be returned. Should extensive work be undertaken on the nearby "Blister" claim a little time might be allotted to underground sampling (a 20' ladder would be needed for the workings near sample No. 46). Any work beyond the aforementioned sampling would require clear marking of the claim boundaries since no corners were definitely located.

No further work is recommended at this time.

L. B. Goldsmith

L. B. Goldsmith, Geologist

J. K. Duff

J. K. Duff, Geologist

Pan-Nevada, Inc.
June, 1968

BIBLIOGRAPHY

BIBLIOGRAPHY

1. ROBERTS, Ralph J., 1964, Stratigraphy and Structure of the Antler Peak Quadrangle, Humboldt and Lander Counties, Nevada. USGS Professional Paper 459-A, U. S. Government Printing Office, Washington, D. C.
2. ROBERTS, Ralph J., and ARNOLD, D. C., 1965, Ore Deposits of the Antler Peak Quadrangle, Humboldt and Lander Counties, Nevada. USGS Professional Paper 459-B, U. S. Government Printing Office, Washington, D. C.

APPENDIX

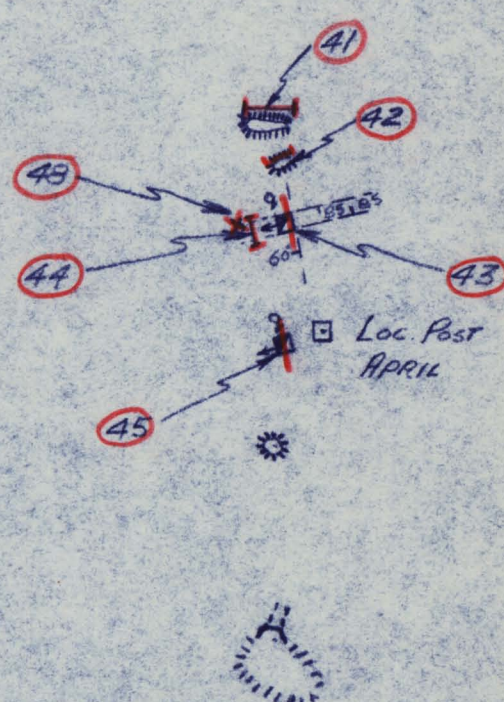
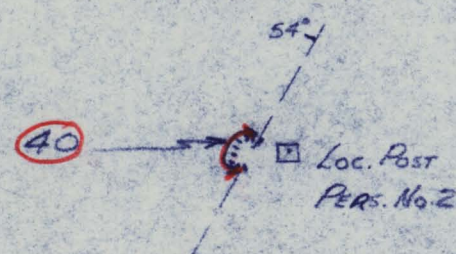
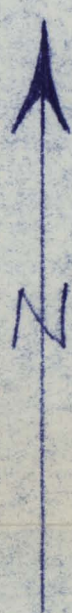
SAMPLE LOGS - PERSPIRATION AND APRIL GROUP

NUMBER	DESCRIPTION	ASSAYS						
		Au Ozs/ton	Ag Ozs/ton	Cu %	Mo %	WO ₃ %	Mn %	Bi %
40.	Channel, across 18'. Shear zone N 30° E, 54° W. Rusty chert, minor black oxides and rusty zones. Alteration to kaolin and clay minerals (sericite). Location post of Perspiration No. 2.	Tr	Nil	0.006	Nil	0.01	0.19	Tr
41.	Grab, 50', loose material thrown upon edge of trench. Rusty material showing removal of carbonate by leaching. No outcrop.	Tr	Nil	0.012	Nil	0.02	0.13	Nil
42.	Chip, 15' intermittent around outcrop in trench. Rusty, vuggy, quartz in altered zone.	Tr	Nil	0.012	Nil	0.07	0.08	Nil
43.	Channel, 25', around S, W, and N walls of incline just below collar. Includes fault gouge from three 6" zones. Unidentified black mineral (sulphide or telluride?). Rusty; calcite leached to form vugs.	0.050	0.1	0.012	Nil	0.02	0.11	Tr
44.	Channel, across 16', 45' down in incline. Around S, W, & N sides. Includes fault gouge from two zones. Black unidentified mineral in quartz. Altered and rusty. Possible barite.	0.013	Nil	0.012	Nil	0.03	0.16	Tr
45.	Channel, 20' around four sides of incline collar. Rusty altered zone, much fracturing. Some pyrite and unidentified black sulphide; Quartz-carbonate, Barite? April location post.	0.010	Nil	0.012	Nil	0.02	0.16	Nil
46.	Channel, 15' around circumference of walls of pit. Rusty, silty chert.	Tr	0.2	0.075	Nil	0.07	0.08	Tr

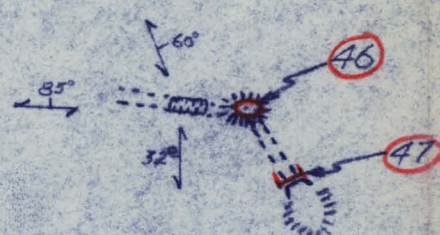
SAMPLE LOGS - PERSPIRATION AND APRIL GROUP

NUMBER	DESCRIPTION	ASSAYS						
		Au Ozs/ton	Ag Ozs/ton	Cu %	Mo %	WO ₃ %	Mn %	Bi %
47.	Channel, across 12', above portal of adit (caved). Bleached, silty chert; altered zone & rusty chert. Vuggy.	Tr	Nil	0.018	Nil	0.04	Nil	Tr
48.	Small grab, from same location as No. 44. Pyrite in quartz & barite? Bronze, malleable, metallic. Bismuth telluride?	0.060	Nil	0.050	Nil	0.03	0.13	Nil

Assays were performed by the Union Assay Office, P. O. Box 1528, 269 Brooklyn Ave., Salt Lake City, Utah; the original report is signed by Glen P. Williams, dated June 14, 1968.



Loc. Post
Pers. No. 1



LEGEND

- q — QUARTZ VEIN
- ▣ SHALT, INCLINED
- ▤ ADIT
- ☼ PIT
- ▢ SLOPE
- 60° FAULT
- FRACTURE
- 40 SAMPLE LOCATION & NUMBER

PAN-NEVADA INC.
PRELIMINARY PACE AND COMPASS PLAN OF
PERSPIRATION & APRIL
T32N, R43E, SEC 31, MDBM
LANDER COUNTY NEVADA
SCALE: 1" = 200'
JUNE 23, 1968
MAPPED BY: LBS & JKD

04800078

h8 1m+1
(47)