

0480 0014

147

Item 14

N o t e s

o n

T H E T O M B O Y M I N E

a n d

T H E C O P P E R C A N Y O N P L A C E R S T R I K E

B a t t l e M o u n t a i n - L a n d e r C o u n t y ,

N e v a d a

Examination: Nov. 7, 1913
Report: Dec. 5, 1913.
By : W.W. SIRDEVAN

N o t e s

o n

THE COPPER CANYON PLACER GROUND

Copper Canyon is located about twenty miles south from Battle mountain. It received its name from the Glasgow Western Mine at the head of the canyon - an old copper property worked a number of years ago but now idle. The Glasgow Western is an English corporation owning a largenumber of claims but few of which are patented. The creek claims in Copper Canyon were located and held for building and purposes and for use as millsites.

The company neglected to perform the annual assesment work on these claims until a year ago. Consequently the claims were jumped during the past summer and re-located as placer claims. Work has been going on steadily for several months by a number of leasers all of whom claim to be making very high wages.

The case was brought into court to secure an injunction against the miners working in the canyon, but the court failed to uphold the Glasgow Western Company.

The deposit is a typical gulch placer - with angular, unsorted gravel containing numerous large boulders. The deposit is about 200 feet in width and about 40 feet in depth near the center of the canyon. The bedrock is an uneven, blocky quartzite, and most of the gravel is also quartzite.

The gold is coarse, not much water worn, practically free from rust, and is concentrated on the bedrock and to a height of about four feet above.

The four feet of pay is hoisted in buckets by windlass, and dumped at the shaft collar. Four men are worked at each shaft. The richest dirt is rocked at the rate of about one cubic yard per rocker per eight hour shift. The leasers claim that their rocker cleanups average from \$80 to \$100 per day. Water is hauled by wagons and costs several dollars per barrel.

About twenty-five men were working in the canyon at the time of my visit.

My pannings from the bedrock on one lease did not check the high average value claimed. I obtained a three cent pan from a foot above the bedrock. This would indicate about \$4 gravel.

THE TOMBOY MINE

The Tomboy Mine is located about a mile east from Copper Canyon. See the accompanying plate.

The deposit is a silicified, brecciated zone from 25 to 50 feet in width, and shows angular pieces of quartzite, quartz, and black slate or lime with quartz cementing. This breccia is traceable for about three thousand feet along the hillside, and the Tomboy claims cover most of this distance.

There is a crosscut tunnel about 200 feet in length, and about 200 feet of drifting in the ore at a depth of fifty feet. The owners claim \$8 to \$9 per ton for the entire width.

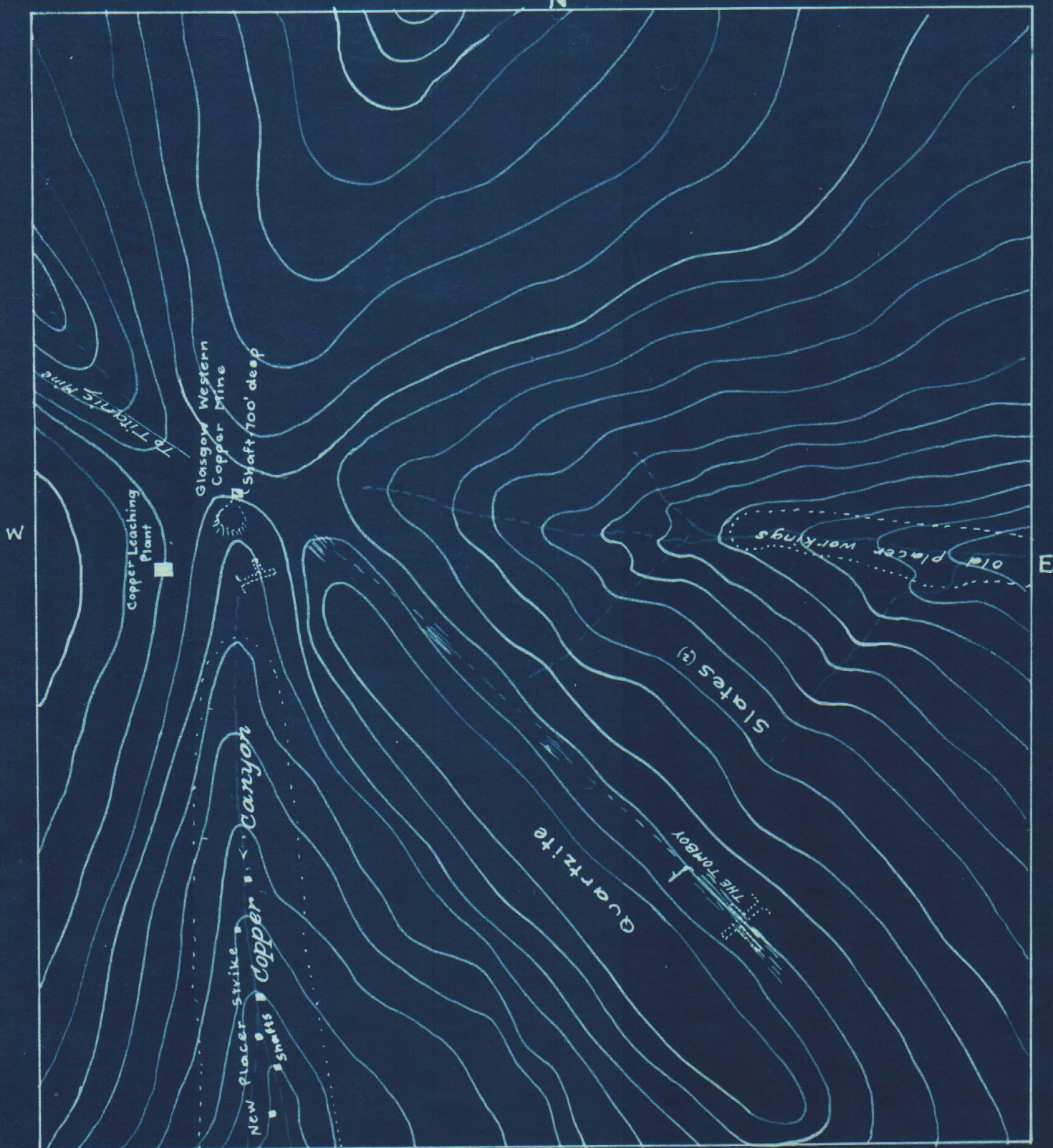
The property was under consideration by Philadelphia people at the time of my visit, so that no samples were taken by me.

This ore is probably the same breccia that was sampled in the Titanic Mine, and indicated an important ore deposit if milling ore can be developed.

Rough Sketch Map
of
COPPER CANYON AND VICINITY
Lander County - Nevada.

No Contour Interval - Scale: 1" = 1/4 mi. (Approx.).

N



S

0 1/4 1/2 1 MILE