

0410 0062

Copper Nevada  
Cirac Property

On August 9, 1940, examined the Cirac property near Aurora, Nevada. A number of assays taken by the Howe Sound Co show some gold and silver, and commercial values in copper. It has been reported that nickel and cobalt are also present. Only type samples were taken, as size of deposit did not permit a detailed examination in one day. Mineralized areas can be traced for a length of 4500 feet and a width of 400 to 600 feet.

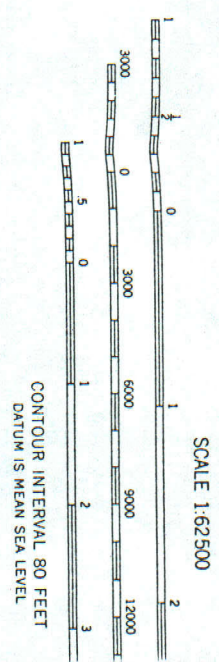
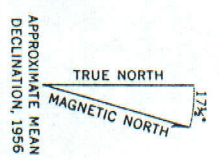
Samples showed low grade copper, some gold and silver; Ni and Co were not there. This property is still considered interesting from a copper standpoint. Bornite was in evidence in several places. Mineralization was in a basic rock. Stain was very extensive. Detailed mapping might do some good.



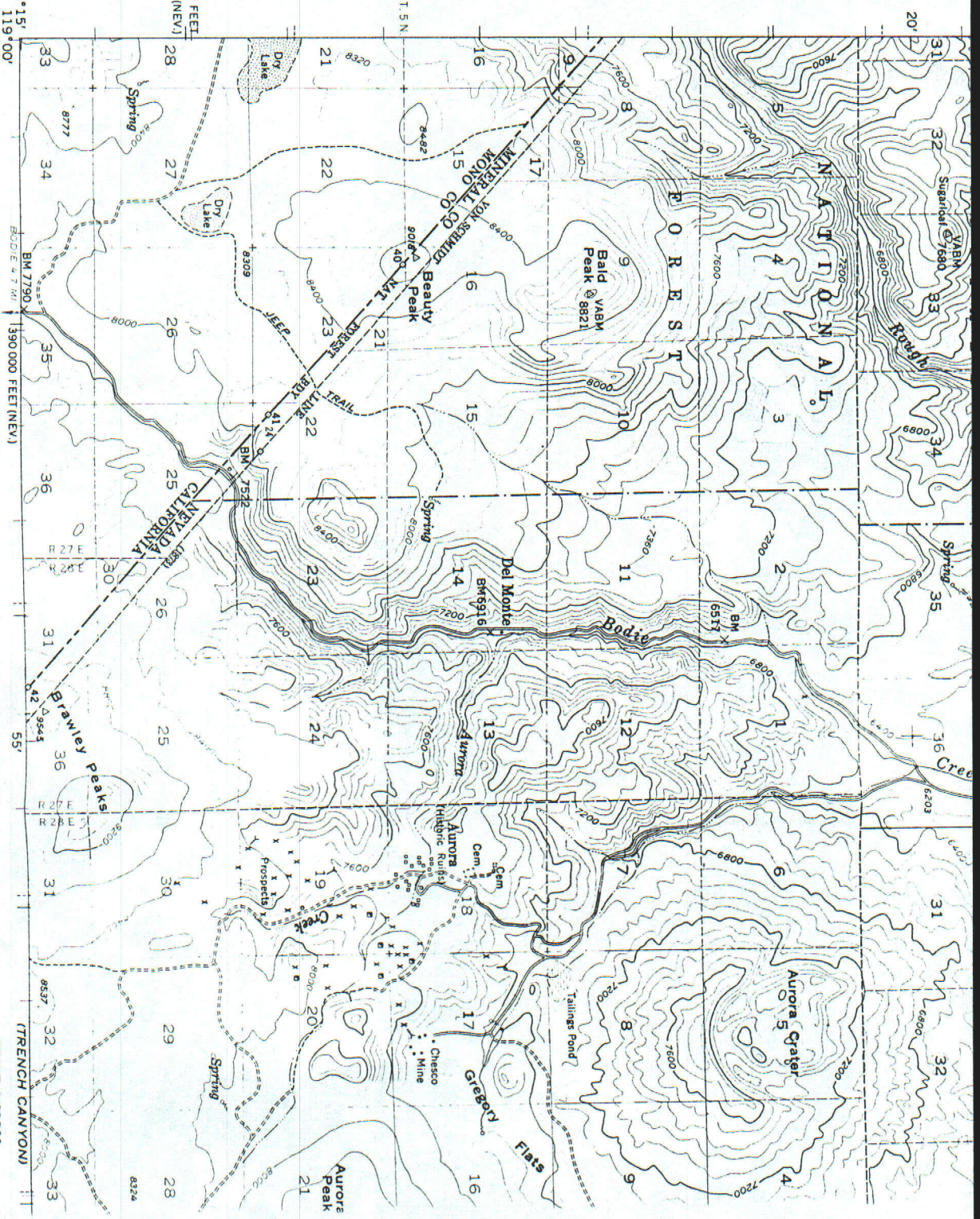
0410 0062

(bodie)

Topography from aerial photographs by multiplex methods  
Aerial photographs taken 1954 and 1955. Field check 1956  
Polyconic projection. 1927 North American datum  
10,000-foot grids based on Nevada coordinate system, west zone  
and California coordinate system, zone 3  
1,000-meter Universal Transverse Mercator grid ticks,  
zone 11, shown in blue  
Dashed land lines indicate approximate locations



THIS MAP COMPLIES WITH NATIONAL MAP ACCURACY  
FOR SALE BY U. S. GEOLOGICAL SURVEY, DENVER 25, COLORADO  
A FOLDER DESCRIBING TOPOGRAPHIC MAPS AND SYMBOLS IS



AURORA, NEV  
15'