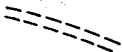


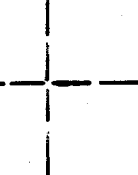



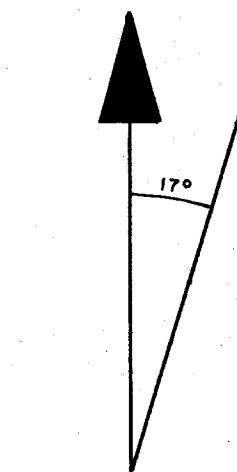
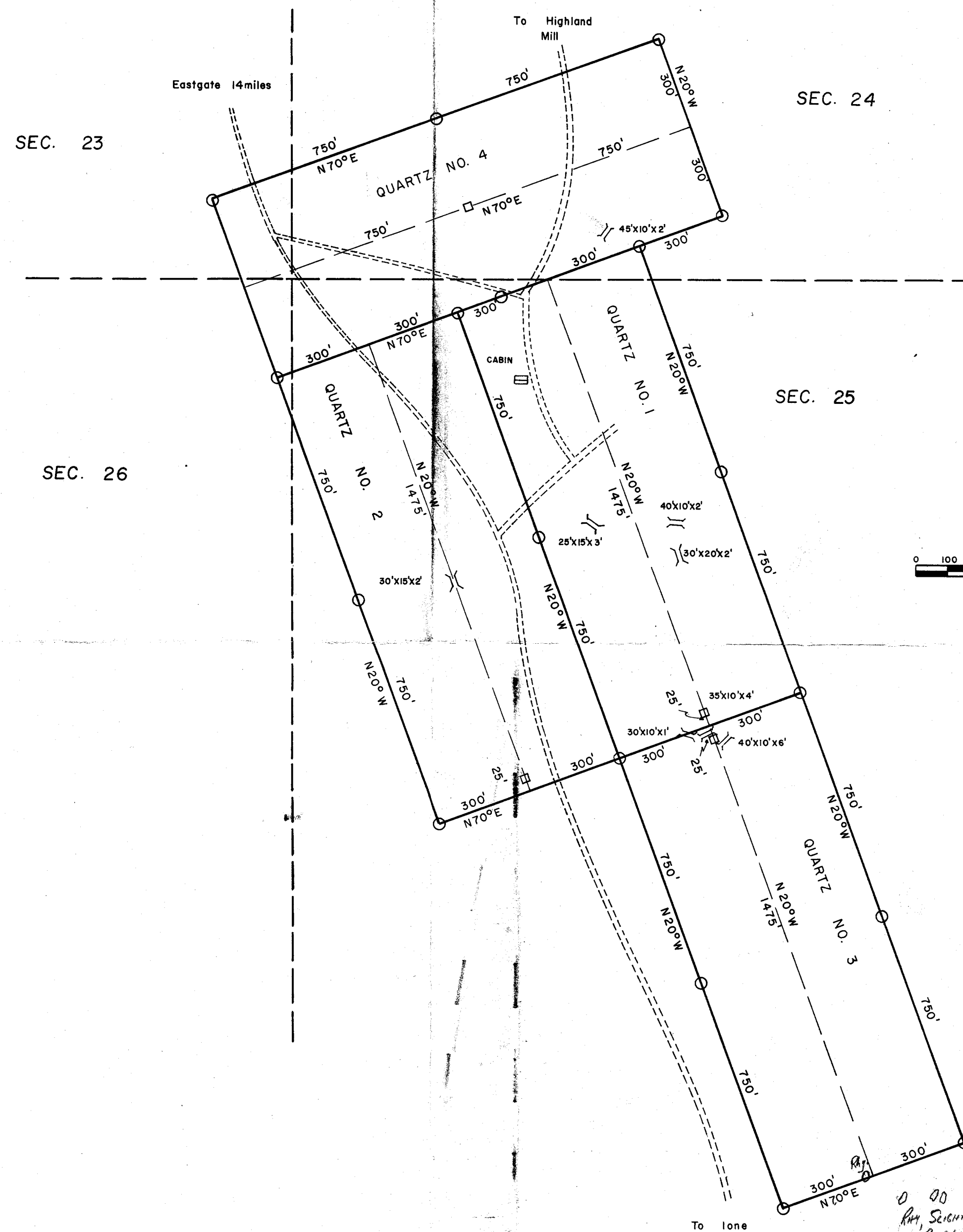
TOWNSHIP 15 NORTH, RANGE 37 EAST MDB & M.

EXPLANATION

-  Dirt Road
-  Boundary Monument — 4" X 6" post
-  Discovery Monument — 4" X 6" post
-  Section lines (unsurveyed). Locations are approximate from USGS 1/250,000 map sheet Millett, Nevada.
-  Open cut showing length x width x depth.

Quartz No.1 and No.2 claims located September 2, 1964. Quartz No.3 and No.4 claims located August 27, 1965

All distances are stadia distances



DECLINATION

SCALE

1" = 300'



FEET

CLAIM MAP
QUARTZ CLAIM GROUP
TELLURIDE MINING DISTRICT
LANDER COUNTY, NEVADA

PROPERTY OF
LEGEND CORPORATION
PANORAMA CITY, CALIFORNIA

R. C. GARDNER AND ASSOCIATES

GEOLOGISTS
2109 GLADYS ST
PASADENA, CALIFORNIA

P21 0480 0185

147 P21