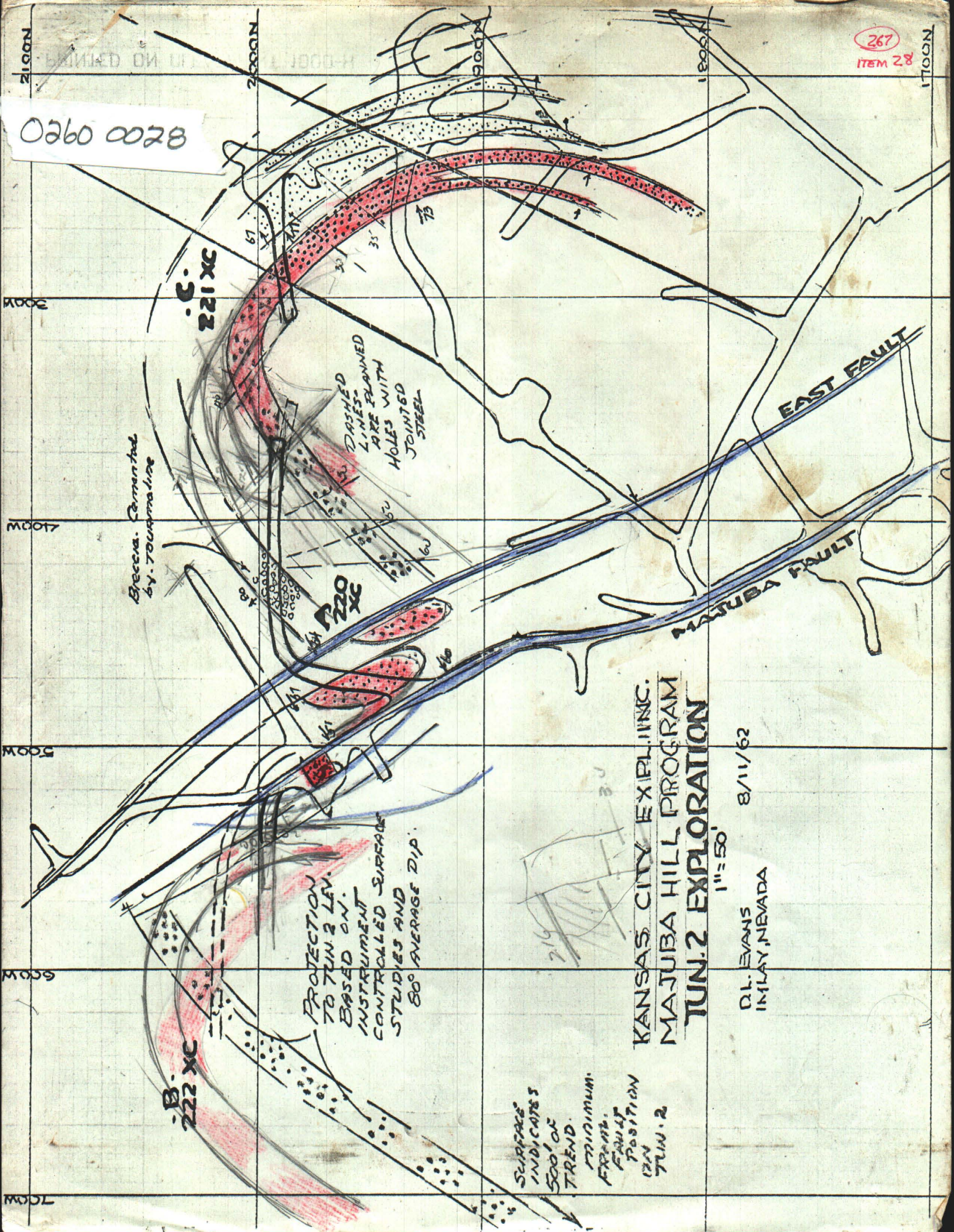


0260 0028



Specimens. Cemented by. TOURMALINE

PROTECTION TO TUN. 2 LEV. BASED ON INSTRUMENT CONTROLLED SURFACE STUDIES AND 80° AVERAGE DIP.

SURFACE INDICATES 500' OF TREND. MINIMUM. EXACT. FAULT POSITION ON TUN. 2

KANSAS CITY EXPLORING.  
MAJUBA HILL PROGRAM  
TUN. 2 EXPLORATION

1" = 50'  
8/11/62  
D.L. EVANS  
IMLAY, NEVADA

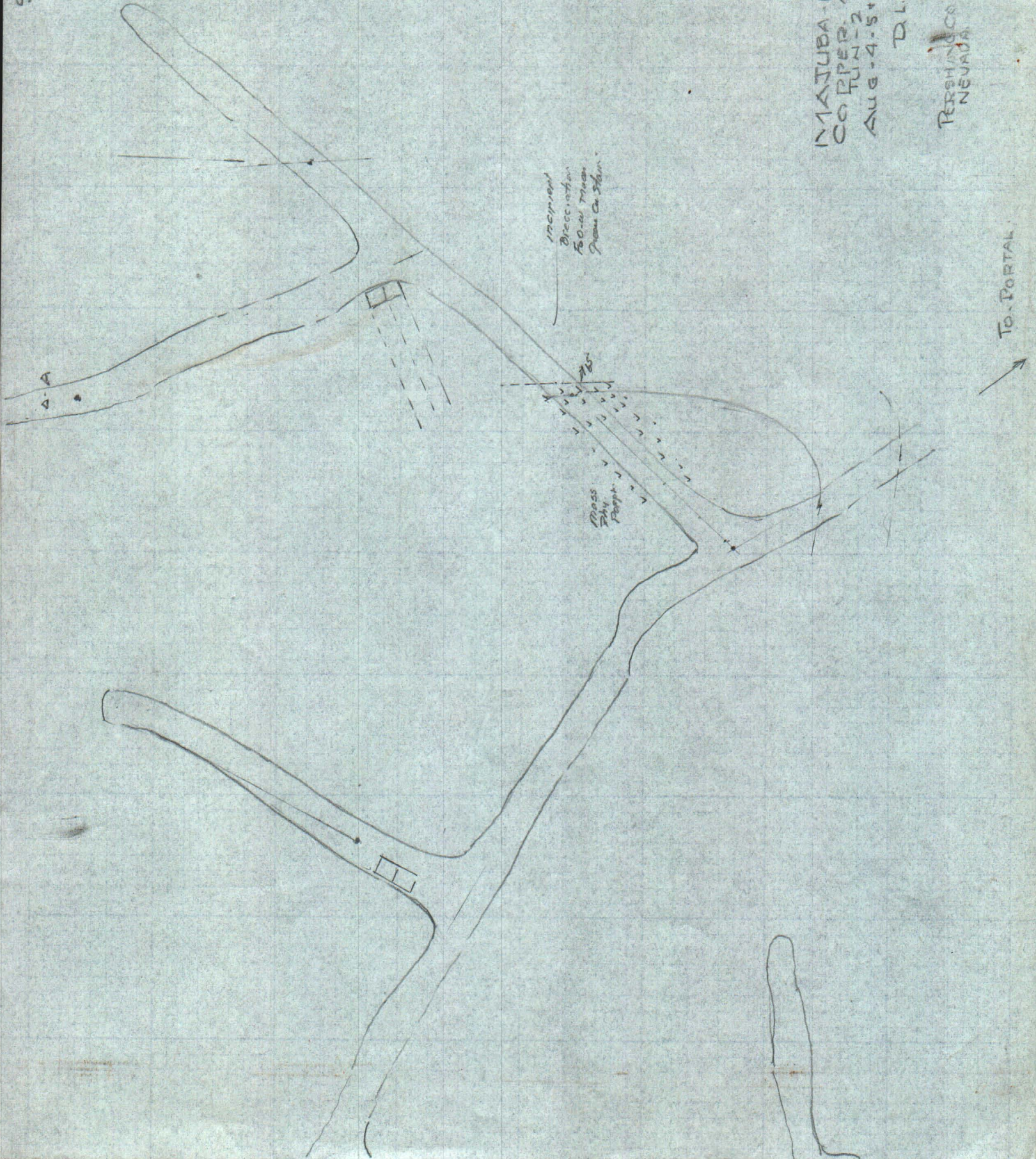


SHEET - 1  
1" = 20'

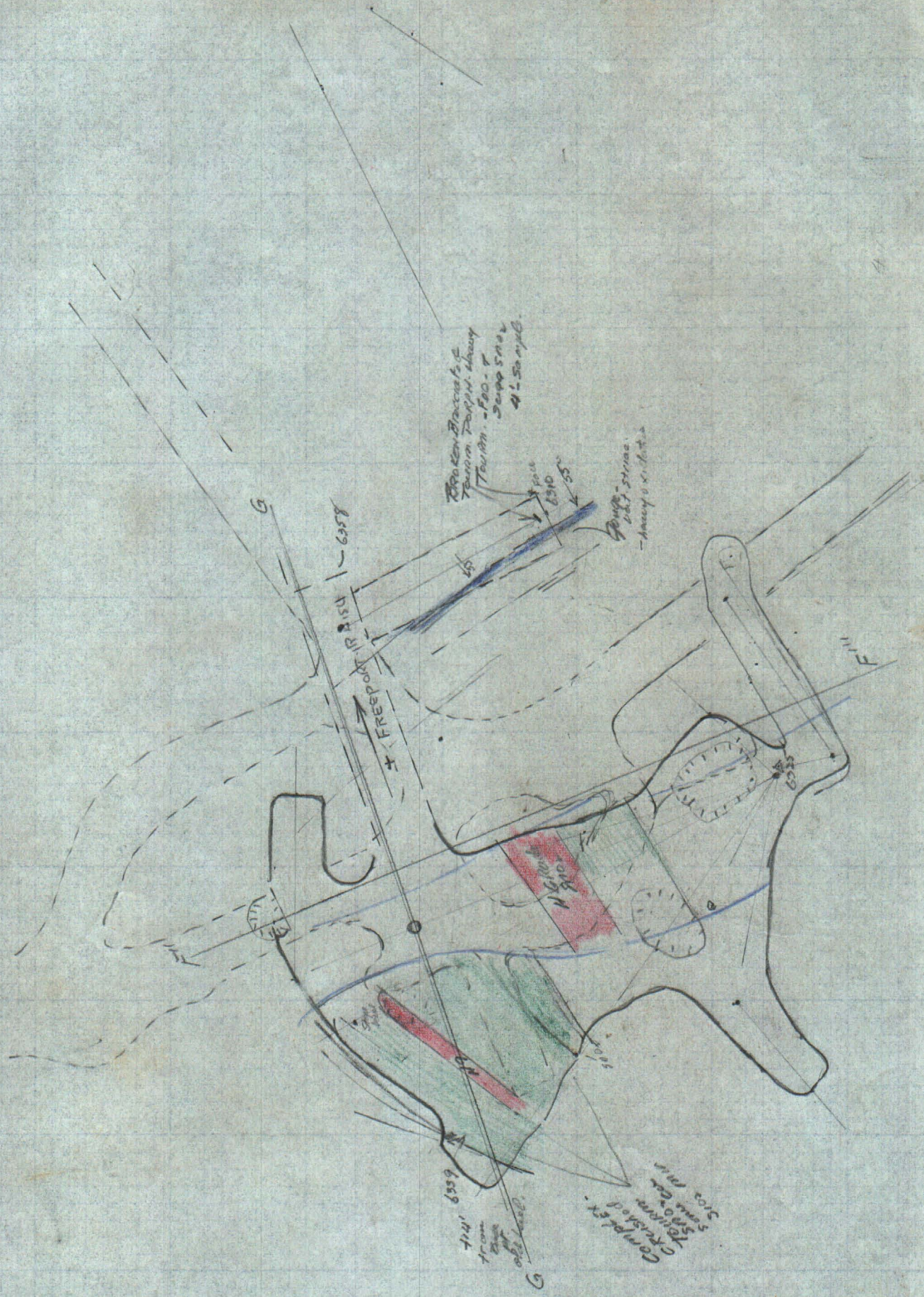
25/200

MATJUBA HILL  
COPPER AREA  
RUN - 2  
AUG - 4 - 5 + 6 - 1961  
D. L. EVANS

PERMITS  
NEVADA







Broken Blocks of  
Turbine Turbine. Heavy  
Turbine. - 500 - 4  
500 yds.

Pump - 20 ft. diam.  
- heavy v. 1. 1/2 in.

FREEPORT ROAD  
6358

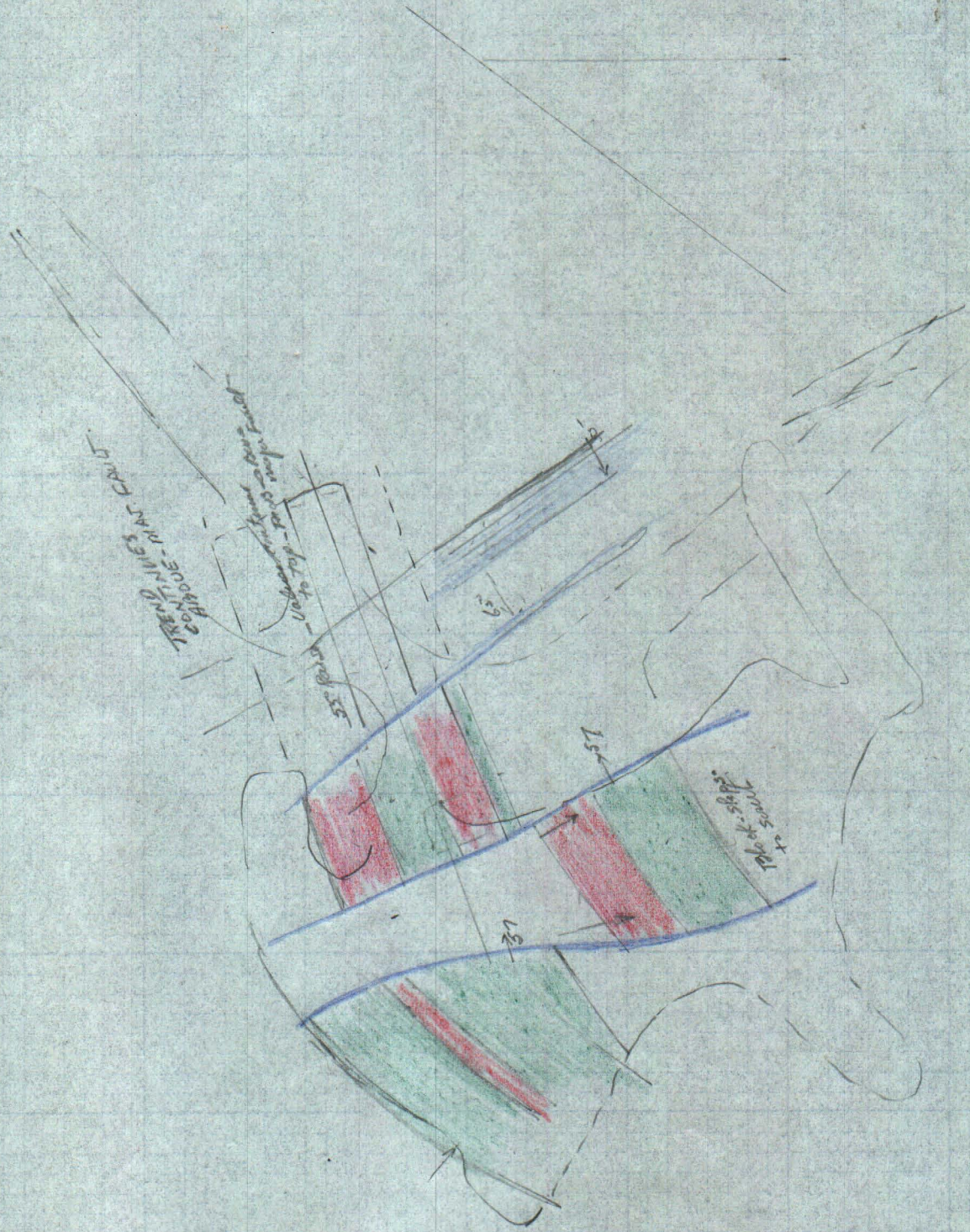
6359  
From  
this  
point  
observed.

Complex -  
Crushed  
5000 gal  
5000 gal  
5000 gal

72



COMPOSITE OF  
 45% OF SH. CL.  
 INDICIALIZATION -  
 IN AREA OF  
 BRANCHING  
 DASHUIGA - FAULTS





6360

6350

6340

6330

6320

6310

6300

CROSSCUTS AT TOP  
- 1-14' 5amp w 3% Cu  
1 4 1/2 " 10.9% Sn

FREEPORT  
50' RAISING  
FROM 180 CARS  
Sn - 0.54%  
Cu 0.50%  
Ag 2.83oz

30x20x12 = 600T  
12

BLOCK 4

1942 GREENAN-KERR  
SHIPPED 400 TONS  
4% Sn. ore.

WEIGHTED-AVERAGE  
BLOCK 2  
14-TIN-STORE

TRUE WIDTH 14 FT  
% Sn - 2.16  
% Cu - 0.50 EST  
% Ag - 2.00 EST

55x16x13 = 950

61.00  
3.3  
1.7  
66.0  
12 Sn. 2.83%  
Cu 0.50%  
Ag 2.00oz

WEIGHTED-AVE-  
BLOCK 1 -  
TUN 2-TIN AREA

TRUE WIDTH - 12 FT  
% Sn - 3.60  
% Cu - 0.50 EST  
% Ag - 2.00 EST

2 1/2'  
6 1/2%

950T @ 2.83  
600T @ 0.54  
150T @ 3.27  
= 1700T 2.10% Sn  
0.50 Cu  
2.00oz Ag.

BLOCK-B - OFF LINE OF SECTION

10x9x25

150 T  
3.27 Sn

16  
55  
80  
80  
80  
13  
2640  
88  
95  
111  
108







SHEET 2  
1" = 20'

Shed - 10' x 10'  
Shed - 10' x 10'  
Shed - 10' x 10'  
Shed - 10' x 10'

Shed - 10' x 10'  
Shed - 10' x 10'

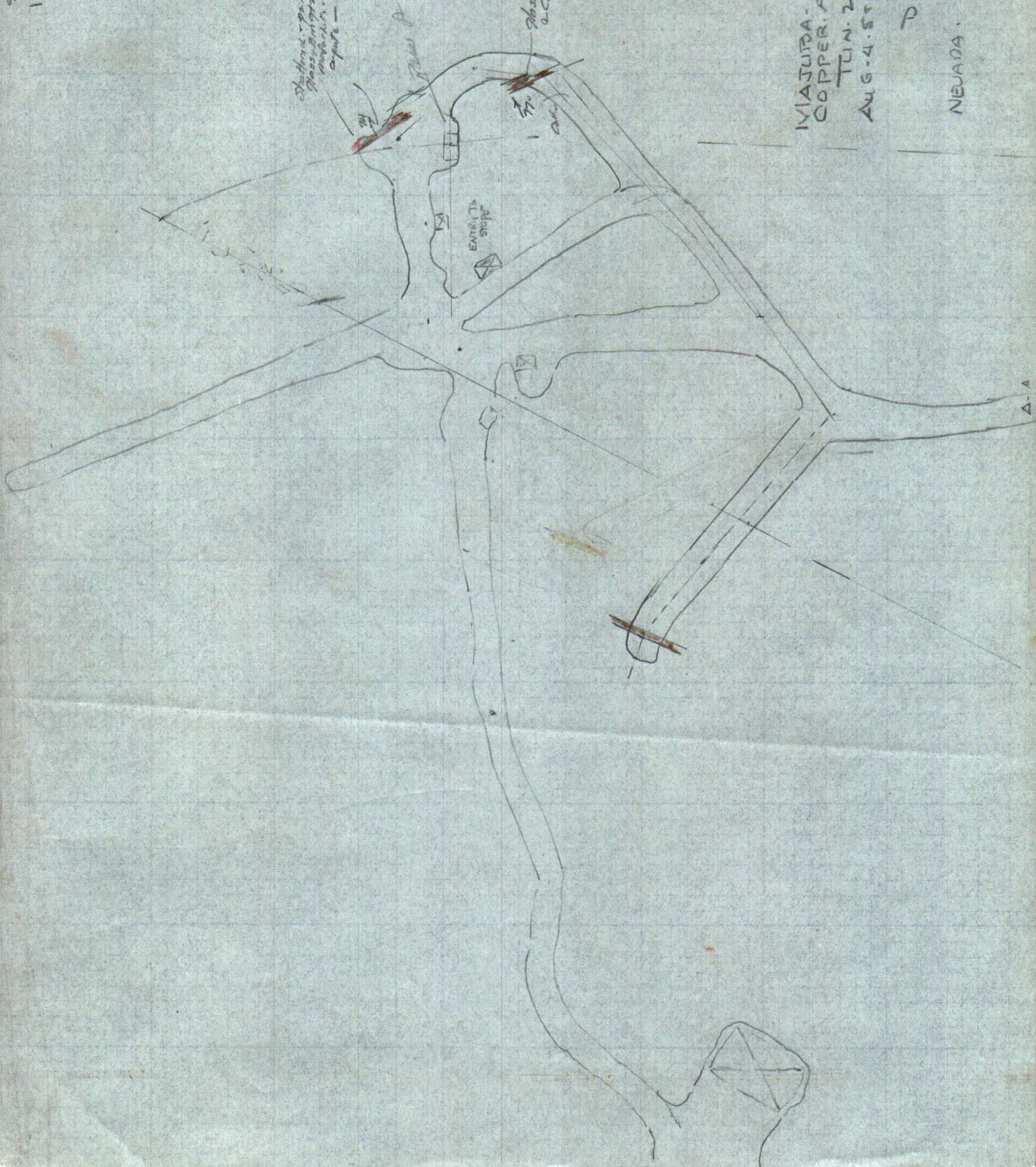
MAJUBA HILL  
COPPER AREA

TUN. 2

AUG. 4. 5. 6. 1961

D. I. EVANS

NEVADA

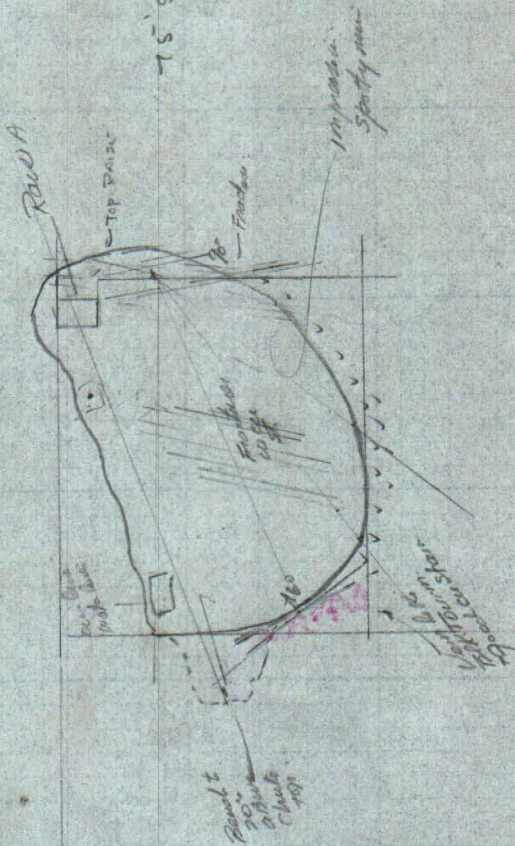




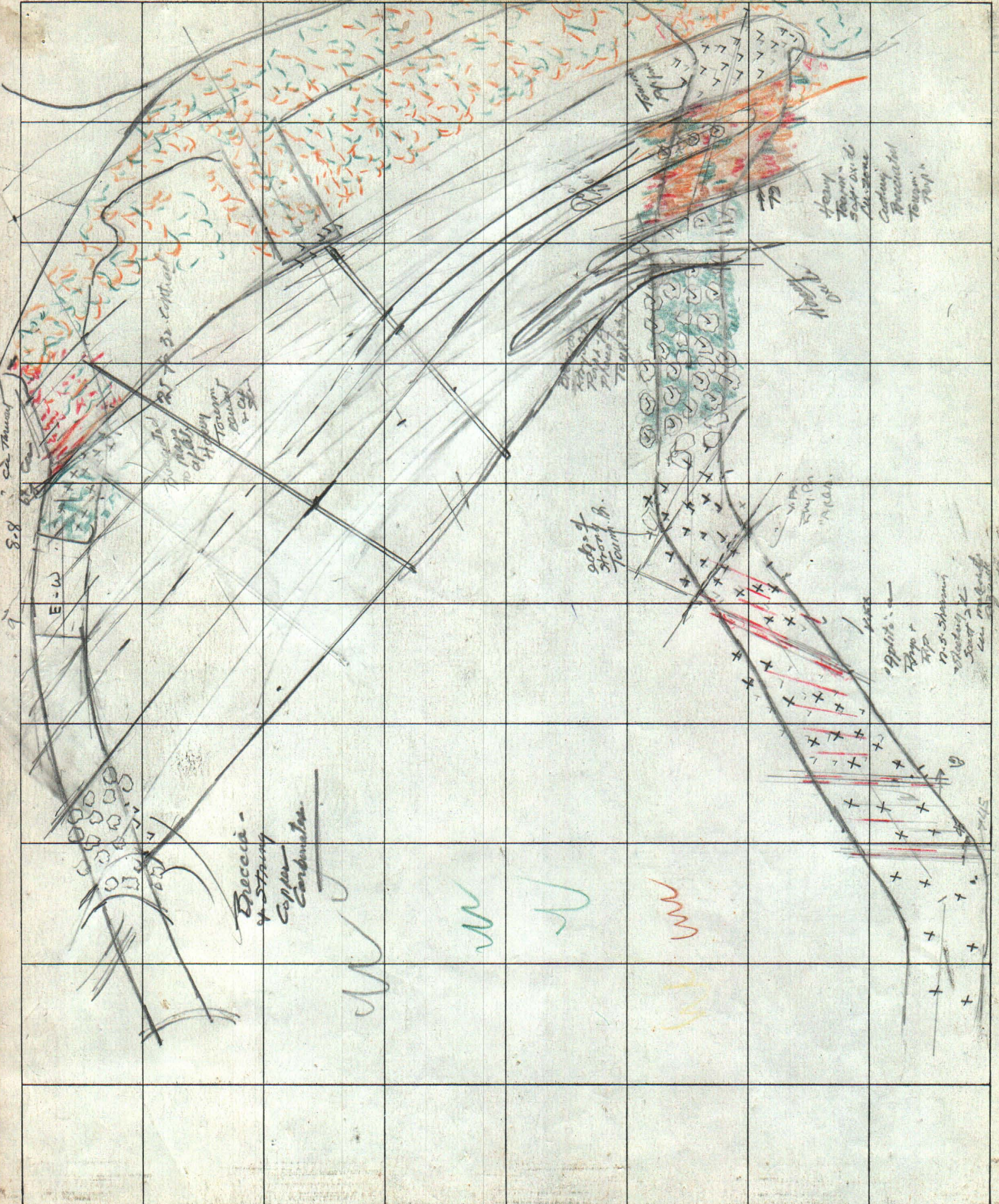
1" = 20'

Mesa Verde Hill  
NE  
Aug 5-1961  
Myler Co  
Hops

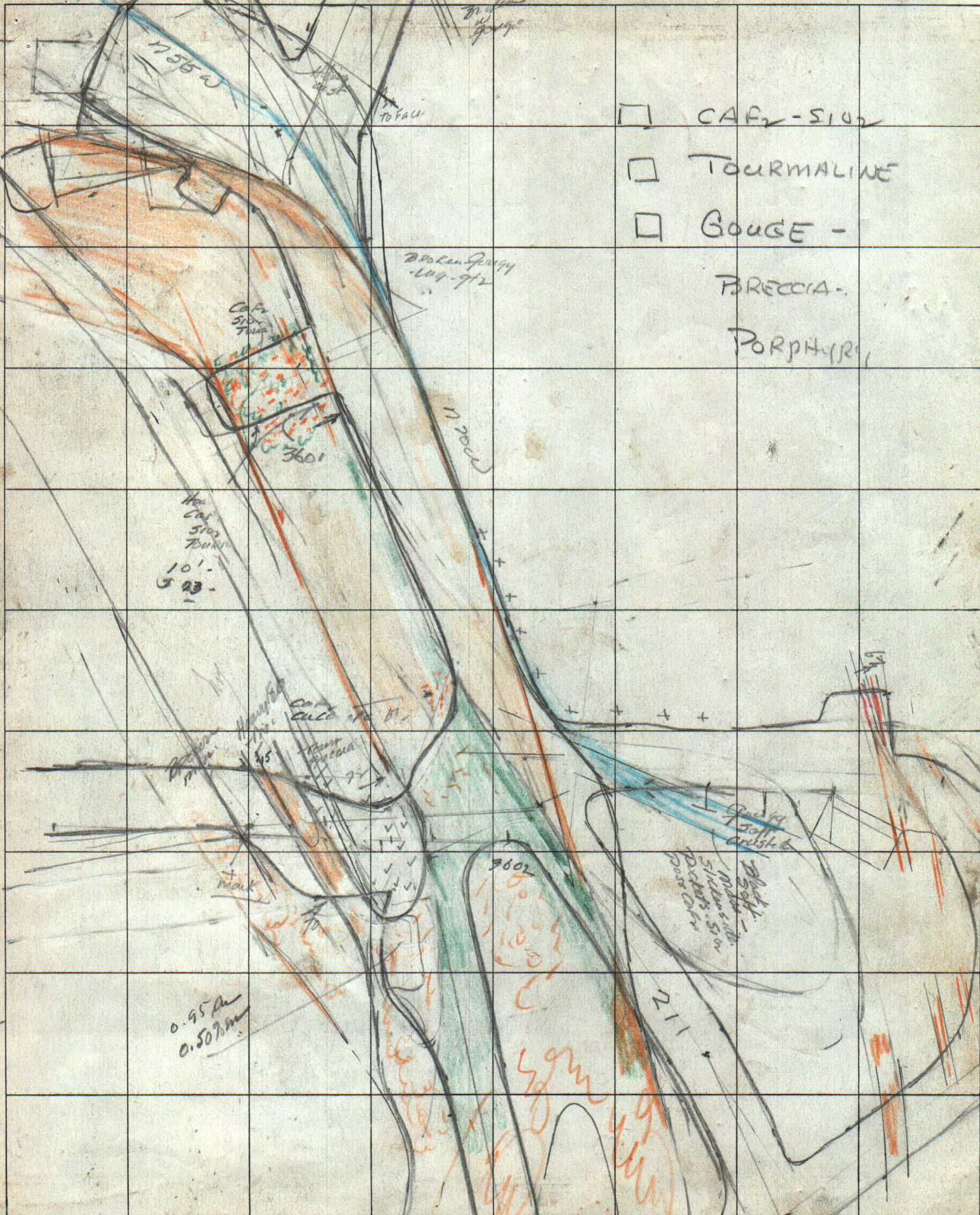
75' slope











- ☐ CAF<sub>2</sub>-SiO<sub>2</sub>
- ☐ TOURMALINE
- ☐ BOUGE - BRECCIA - PORPHYRY

No. 5103  
Bank  
101-  
523

Broken ground  
114-972

17200 W

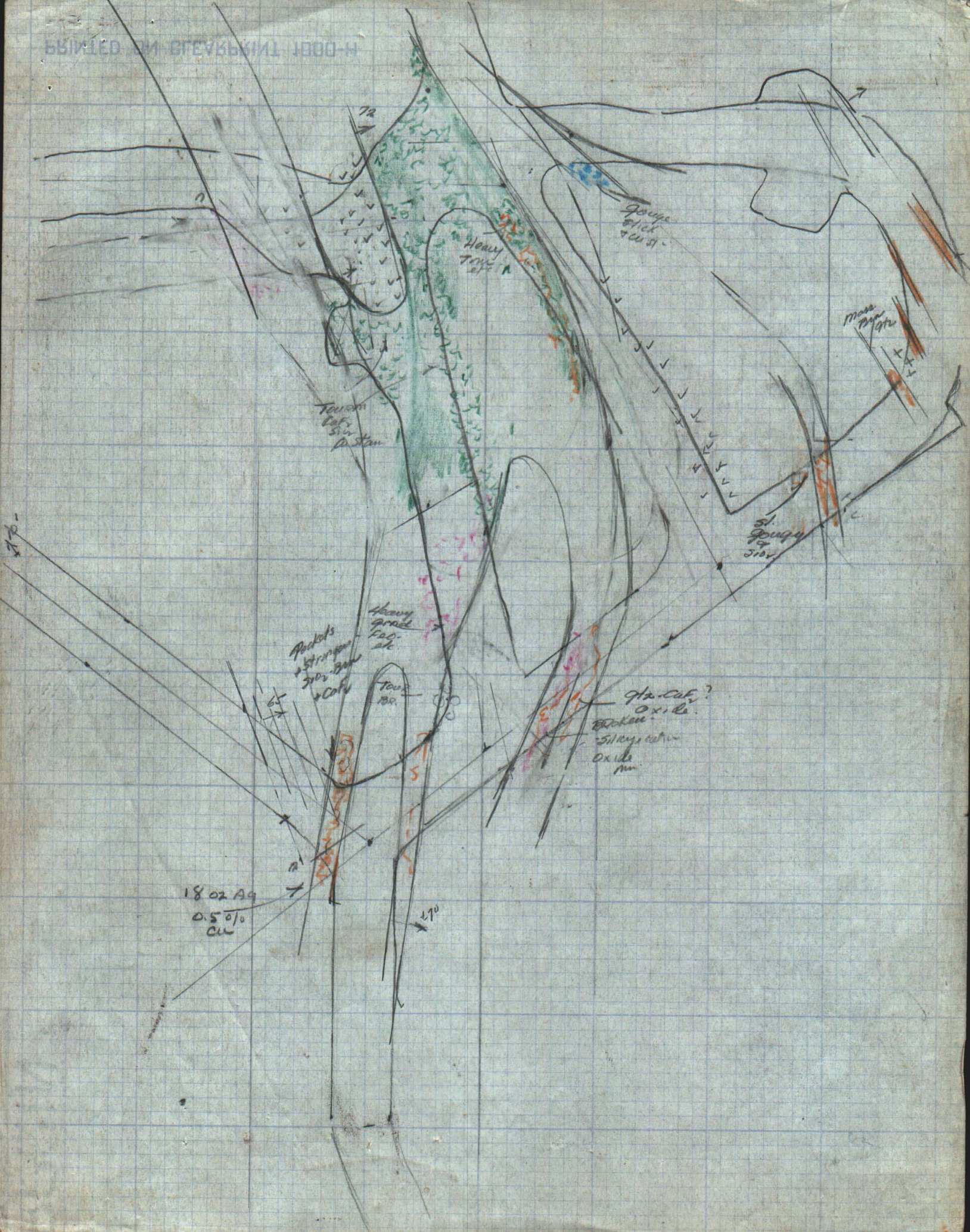
0.95 Au  
0.50 Ag

9802

211

3601  
3602  
3603  
3604  
3605  
3606  
3607  
3608  
3609  
3610  
3611  
3612  
3613  
3614  
3615  
3616  
3617  
3618  
3619  
3620  
3621  
3622  
3623  
3624  
3625  
3626  
3627  
3628  
3629  
3630  
3631  
3632  
3633  
3634  
3635  
3636  
3637  
3638  
3639  
3640  
3641  
3642  
3643  
3644  
3645  
3646  
3647  
3648  
3649  
3650  
3651  
3652  
3653  
3654  
3655  
3656  
3657  
3658  
3659  
3660  
3661  
3662  
3663  
3664  
3665  
3666  
3667  
3668  
3669  
3670  
3671  
3672  
3673  
3674  
3675  
3676  
3677  
3678  
3679  
3680  
3681  
3682  
3683  
3684  
3685  
3686  
3687  
3688  
3689  
3690  
3691  
3692  
3693  
3694  
3695  
3696  
3697  
3698  
3699  
3700







PRINTED ON RECYCLED PAPER

US 510  
S. 509E

3606  
181  
909E

Cu 0.36%  
Sn 0.12%  
Ag 1.60oz  
Au 0.01oz

3606  
181  
909E

Heavy Road

Block -  
PARTIAL BRECCIA  
1 Road on top  
4 TOURS

Good  
Cu  
min

LH 2

23'

241'

200'

180'

20'

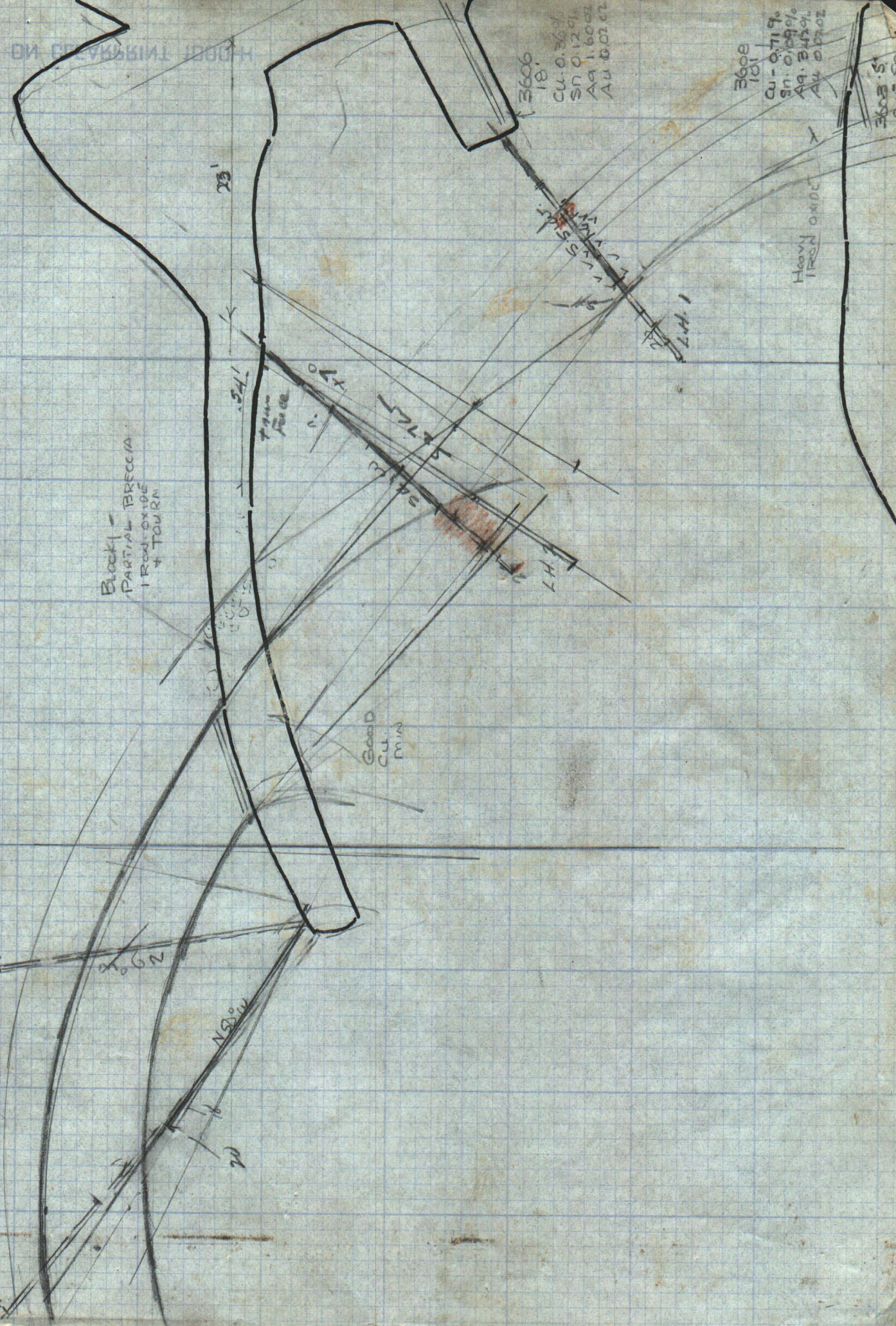
3606  
181  
909E

3606  
181  
909E

181'

LH 2

LH 1





221-EXPLOR

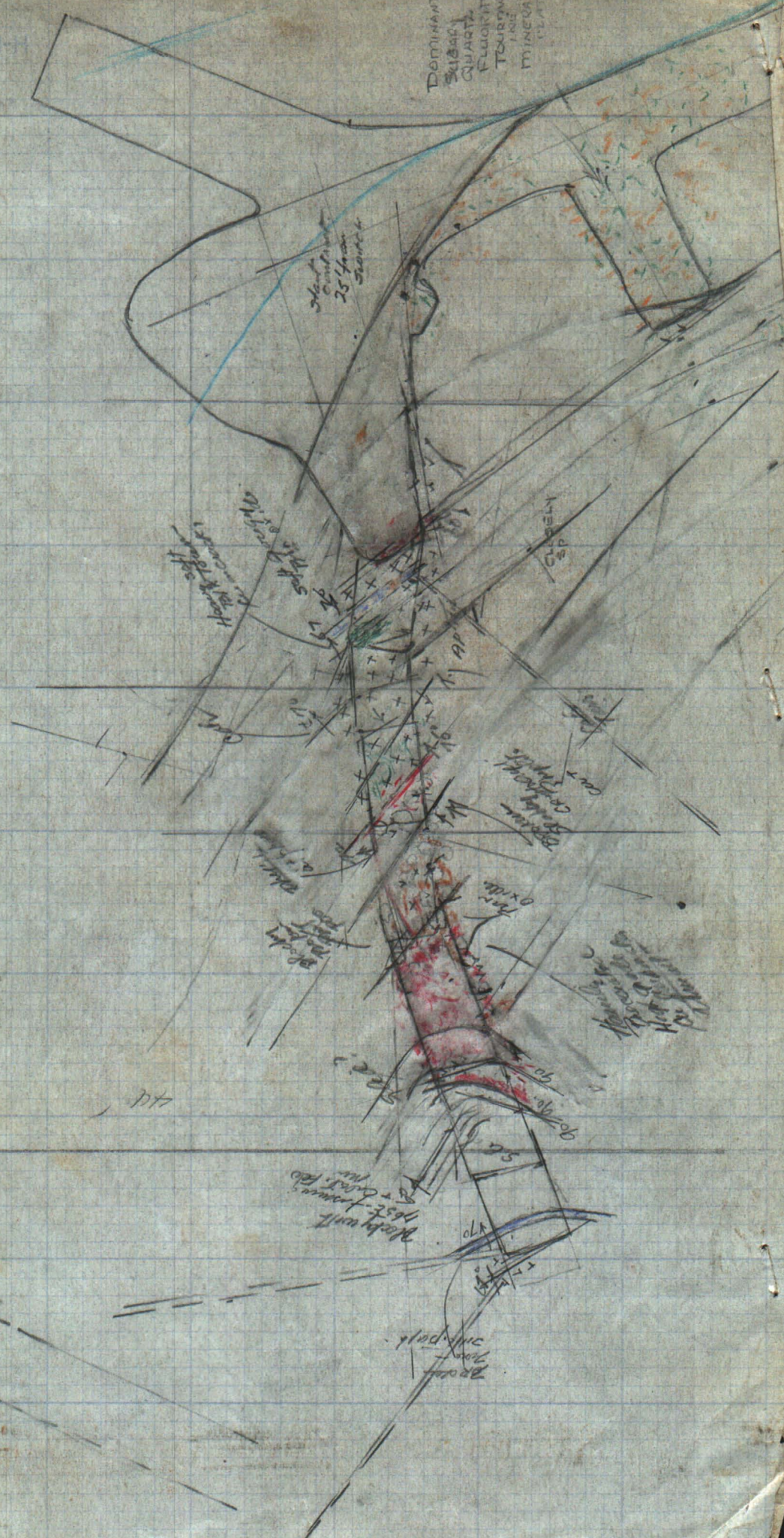
DOMINANT  
SILICA  
QUARTZ  
FLUORITE  
TOURMALINE  
MINERAL

Moose Snell  
Muddy Landing

BRUNNEN  
7976 N  
H. White Chalk

Aug 16  
63.5  
14

#3811  
221  
51760  
or 1741  
Rib.



SILICA  
SP

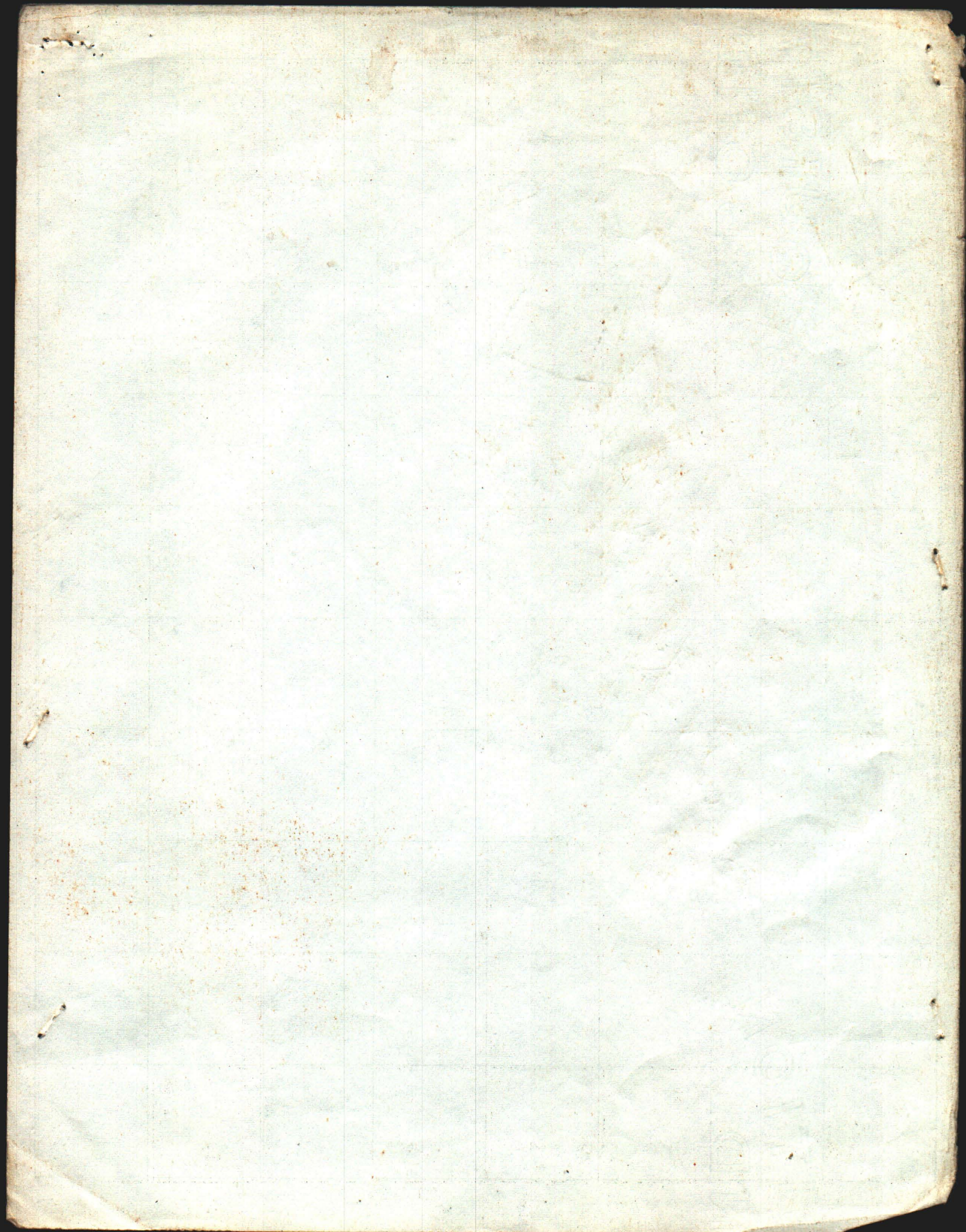
Molybdenum  
Fluorite  
Tourmaline  
Mineral

Molybdenum  
Fluorite  
Tourmaline  
Mineral

Molybdenum  
Fluorite  
Tourmaline  
Mineral

Molybdenum  
Fluorite  
Tourmaline  
Mineral







20H51  
3 Jun

A - Area Heavy Br. Tourm. +  
Porph - Followed by Brn  
Crysqtz - Ca As + Cu-St.

AGOW  
633

B - Mass Por - Cut by N-S  
Shear - poss. some  
Incipient Breccia -  
Custain in steep areas

36  
16 1410  
32  
90

Tour  
Br

CL  
St

Heavy  
Breccia  
Lata 9th  
Cen  
Thin  
St

Good  
Cuts  
along  
Stream

Soft Breccia  
in  
P.O.  
gradient

Coarse  
Breccia  
Heavy  
100' Fract.  
Soft  
Cement  
Ca St

Soft  
Porph  
at  
porph.  
oxidized  
massive  
St

25

2  
29H 8 of  
7 Jun

Cr. of  
Tour. Br.  
Cu - min  
Rhy. Pa  
Gouge  
soft

MU  
116

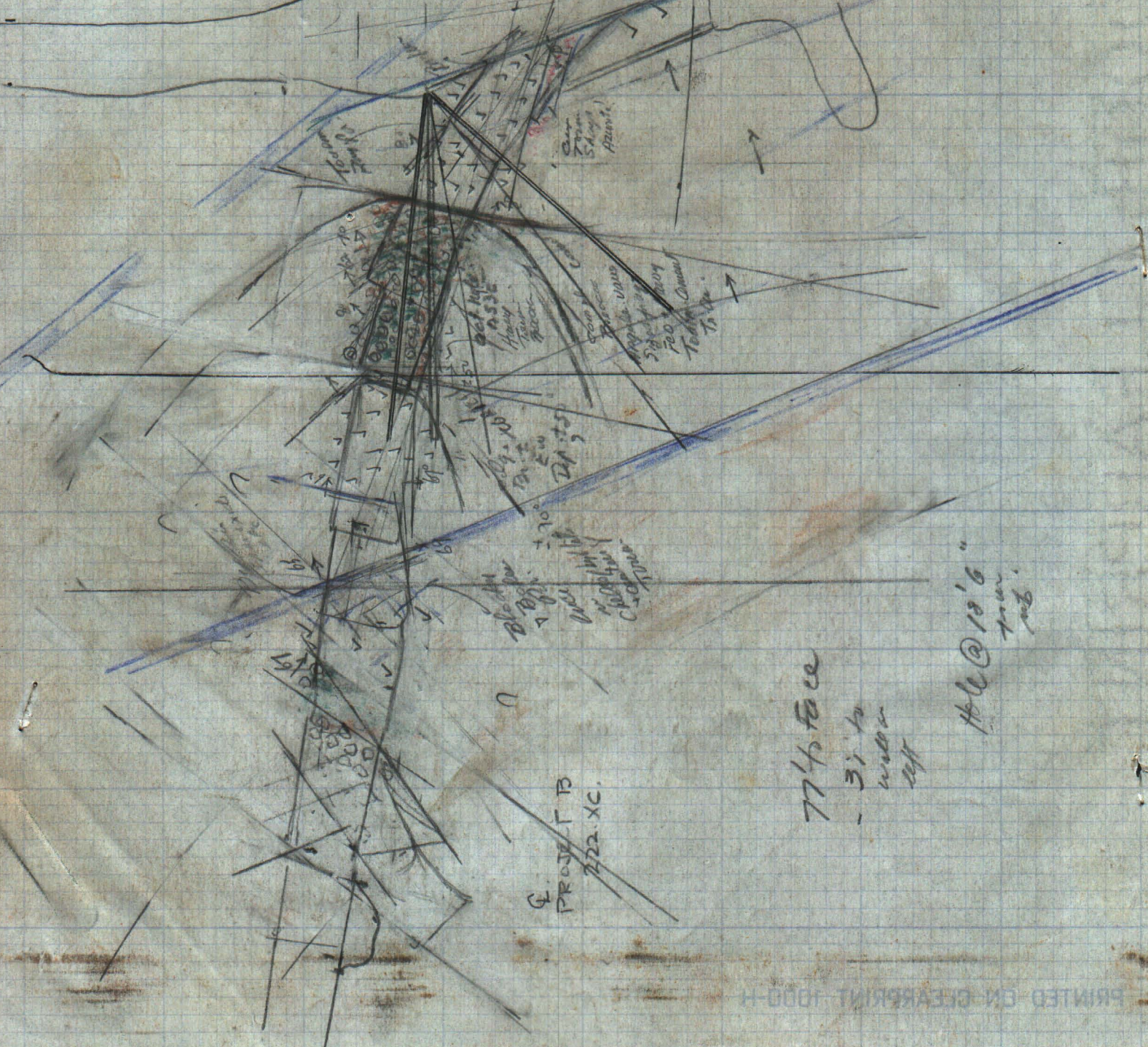




100' N=10'

67

As of 3/18/80  
31-5-80  
67 to face  
fringe  
7-8-80



PROJ. T 13  
222.XC.

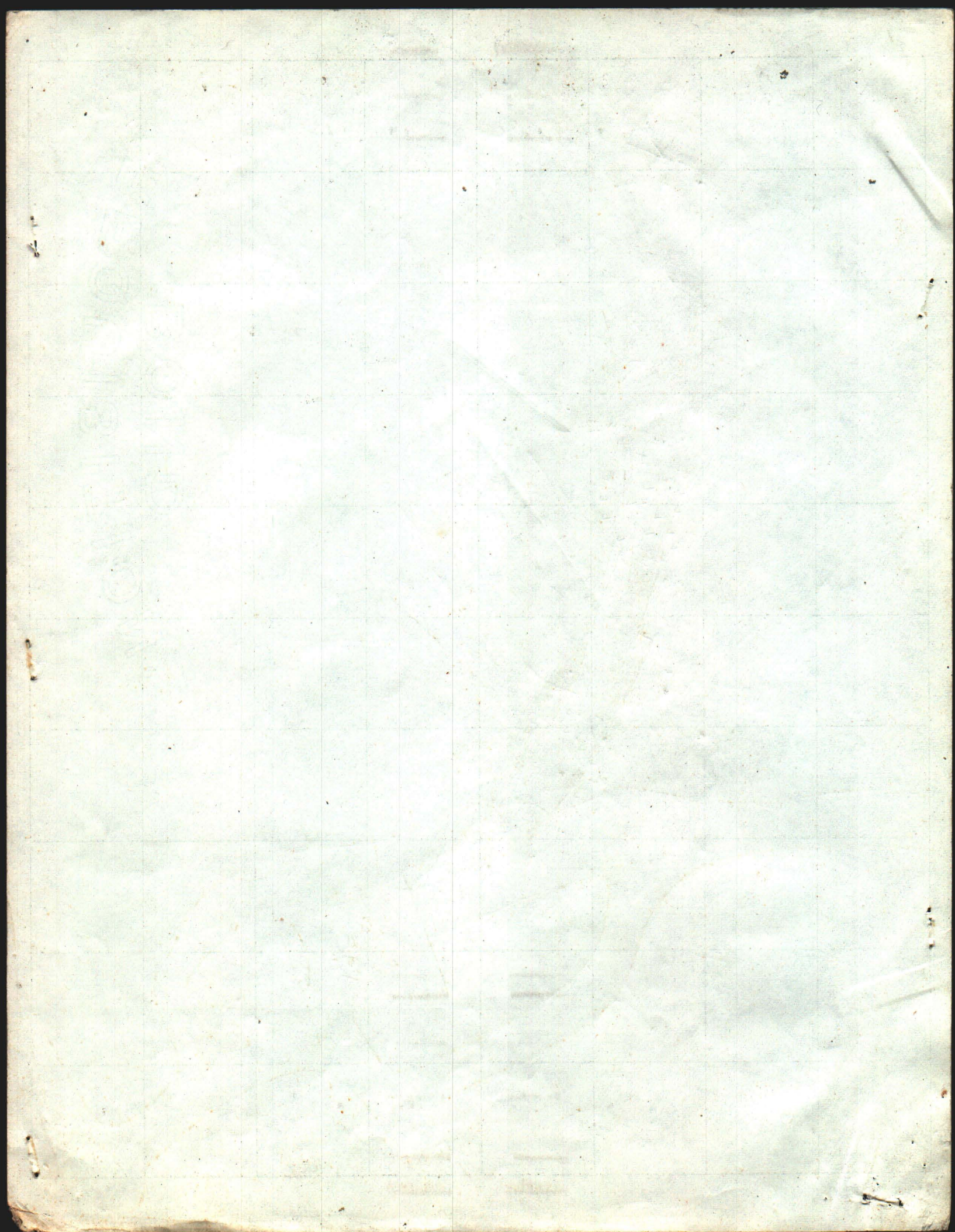
77 to face  
- 31 to under diff

44 @ 19'6"



This image shows a blank sheet of graph paper with a grid of 10 columns and 10 rows. The paper is aged and has some discoloration and stains. The grid lines are thin and black. The paper is otherwise empty of any text or markings.





220 EXPL  
DR

57 1/2  
17  
13  
84 1/2  
15 1/2  
69 - Ft  
Contract.

To July 31  
7 Ft 221  
76'

Aug 4 - Aug 9  
1800 m SF

64  
95  
159  
89  
70

159








Modification of MATJARA -  
APPROACH - TO ACCOMMODATE  
ANTICIPATED LONGER  
FOOTAGE - ON PROJECT - B.

1. - DRIVE - 220 + 221 - THRU VEIN AND - TWO RUNS BEYOND

$$\begin{array}{r} 221 = 75 \text{ FEET} \\ 220 = 150 \text{ FEET} \\ \hline 225 \end{array}$$

WITH SPECIAL JOINED STEEL

2. DRILL - 9 - HOLES, FROM 220 + 221 - TOTALING - 280 FEET

This represents - - 405 deep - Maximum  
& can be done while - Doing - 3

3. DRIVE PROJECT B - 100' - TO INTERCEPT - VEIN  
IN HANGING WALL. LONG HOLE - TO DEVELOP 100' -  
OF TREND.



