

0110 0028

NW-31-3

Stone

184

Item

Mining District: TABLE MOUNTAIN QUARRY  
(Stone)

T. 17 N., R. 23 E.  
Lyon County, Nevada  
USGS Churchill Butte 15-min. quadrangle (1957)

#### GENERAL BACKGROUND

Table Mountain Quarry is located immediately northwest of Table Mountain in section 33, T. 17 N., R. 23 E. The quarry is used as a source of pit run material for local road construction and maintenance.

#### GEOLOGICAL AND TECHNICAL DATA

The pit has been opened in highly fractured volcanic rock of Tertiary age.

#### POTENTIAL FOR DEVELOPMENT

The quarry will undoubtedly continue to be used as a local source of aggregate for road construction and maintenance.

#### COMPANIES AND CLAIMANTS ACTIVE IN AREA

Unknown.

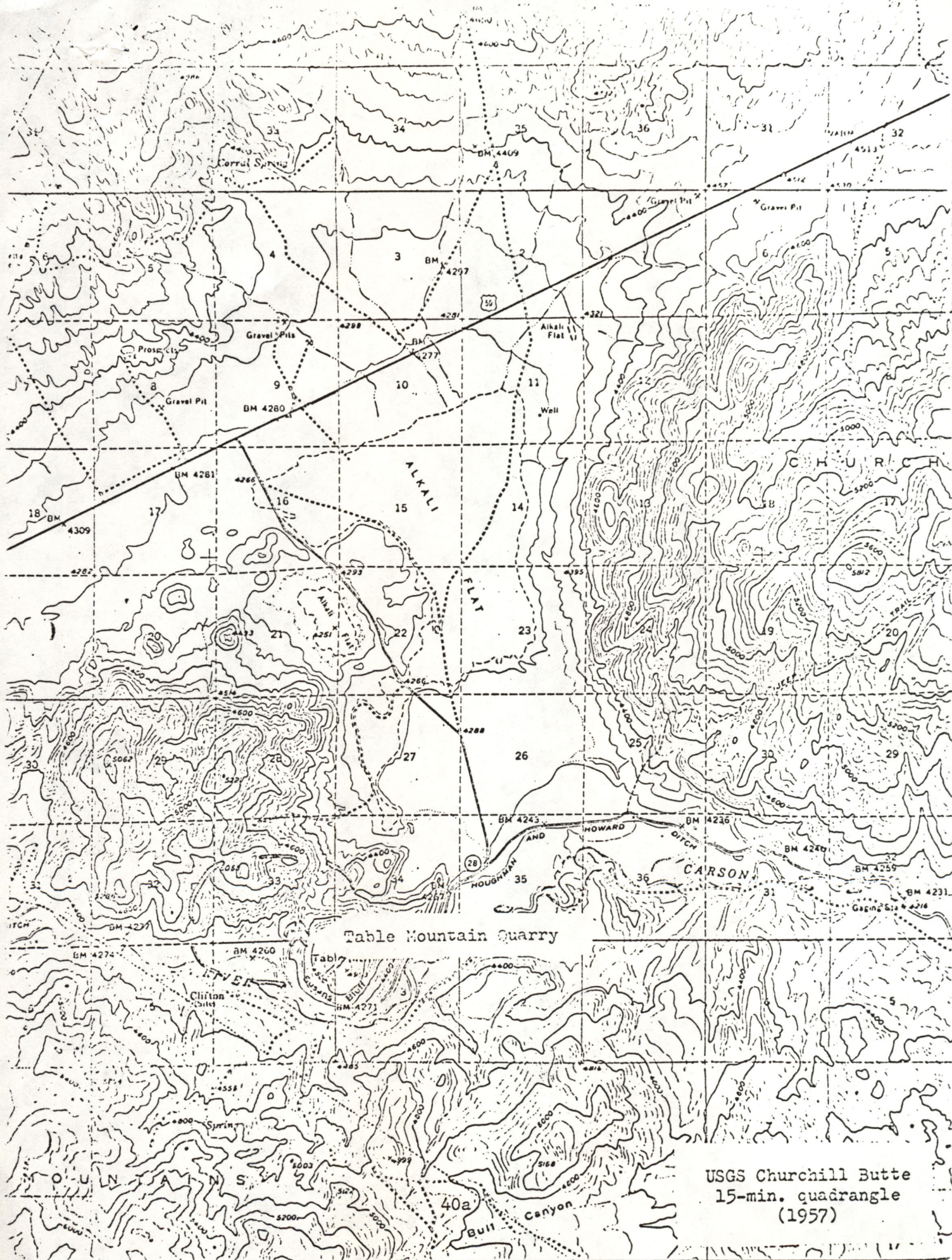
#### SELECTED REFERENCES

1. Moore: Geology and Mineral Deposits of Lyon, Douglas, and Ormsby Counties, Nevada; Nev. Bur. Mines Bull. 75, 1969.  
(Includes geologic map of area)

#### FIELD EXAMINATION

Bennett, May 1973







*Taken from:*

Mineral Resources Inventory and Analysis  
of the  
Pine Nut Planning Unit

Carson City District  
Nevada and California

By  
R. E. Bennett  
1973

~~see~~ Douglas County - general

Item 15

for preface & general  
background information