

0110 0013

Lyon Co. - general

NW-32-6

Item 15

Mining District: DRY LAKE CLAY DEPOSIT
(Clay)

T. 15 N., R. 24 E.
Lyon County, Nevada
USGS Como 15-min. quadrangle (1957)

GENERAL BACKGROUND

The Dry Lake clay deposit is located in section 22, T. 15 N., R. 24 E., in Churchill Canyon.

Archbold, in Moore (1) reports that sedimentary clay and silt have been scalped from the surface of a playa lake for use in sealing tanks and reservoirs. Most of the material was used at the Minnesota mine which is now inactive.

GEOLOGICAL AND TECHNICAL DATA

Playa lakes are common in arid environments and after infrequent rains often contain water a few inches deep. Repeated cycles of precipitation, runoff, sedimentation, and evaporation leaves a flat deposit of clay, silt, and salts.

Impurities in deposits of this type usually limit its use to construction applications such as impermeable cores of earthen dams.

POTENTIAL FOR DEVELOPMENT

Clay and silt may be sporadically mined in the future for applications indicated above. Operations would not be large and extraction would be on an "as required" basis.

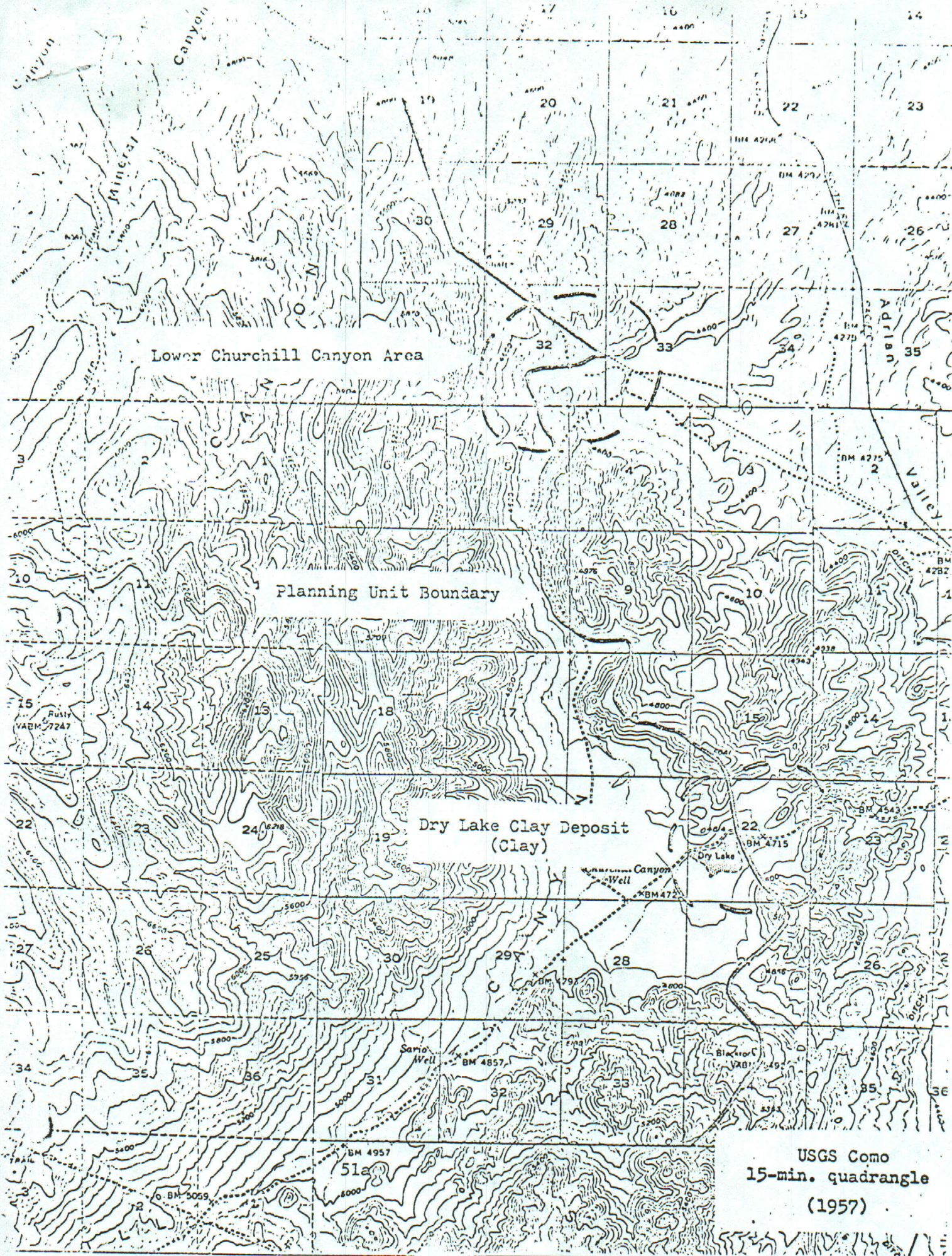
SELECTED REFERENCES

1. Moore: Geology and Mineral Resources of Lyon, Douglas, and Ormsby Counties, Nevada; Nev. Bur. Mines Bull. 75, 1969.
(Includes map of the area)

FIELD EXAMINATION

Bennett, Sept., 1973.

Bennett, Sept. 1973



Taken from:

Mineral Resources Inventory and Analysis

of the

Pine Nut Planning Unit

Carson City District
Nevada and California

By

R. E. Bennett

1973

see Douglas County - general

Item 15

*for preface & general
background information*

(0040 0011)