

0040 0015
Mining District: MINERAL PEAK AREA
(Gold, Silver, Copper, Tungsten, Uranium, Iron)

Douglas County - general
NW-31-7
Au, Ag, Cu, W
U, Fe
Item 18

T. 13-14-15 N., R. 20-21-22-23-24 E.
Carson City, Douglas, Lyon Counties, Nevada
USGS Dayton 15-min. quadrangle (1956) and Como 15-min.
quadrangle (1957)

GENERAL BACKGROUND

Indicated mineral area NW-31-7 encompasses a tract of land about 6 miles wide and trending east-west. The area is bounded on the west by the foothills of the Pine Nut Mountains and on the east by the boarder of the planning unit.

The area was first prospected in the 1870's, but no production has been recorded for any of the mines located in this area.

The Alex Eske tungsten-iron deposit is located in sections 8 and 17, T. 14 N., R. 21 E., on the south flank of McTarnahan Hill. Although no production is recorded, it is likely that this mine produced some gold and silver ore.

The June Ellen gold-silver mine is located in section 3, T. 14 N., R. 21 E., approximately 2 miles east of McTarnahan Hill. Although no production is recorded, it is likely that this mine produced some gold and silver ore.

The Utopian (United) copper mine is located in section 23, T. 14 N., R. 21 E., about 1 mile northwest of Pipe Spring. Development work at this mine began in the early 1900's, but operations were abandoned by 1915. The area surrounding the Utopian mine was the site of a major exploration effort in the late 1960's. A drilling program was initiated and numerous holes completed; the results of which were not made public. The claims are presently idle.

AEC records indicate an uranium prospect in section 26, T. 14 N. R. 21 E. There has been no production from this prospect.

GEOLOGICAL AND TECHNICAL DATA

The oldest rocks in the area are metamorphic rocks of Triassic and Jurassic age. These metavolcanic and metasedimentary rocks occur in roof pendants or septa surrounded by younger intrusive rocks of granitic composition. Unconformably overlying these older rocks are tuffs, breccias, and flows of the Tertiary Hartford Hill Rhyolite, Alta Formation, and the Kate Peak Formation. Tertiary lacustrine and fluvatile sedimentary rocks crop out in the southwestern portion of the area.

Mesozoic metasedimentary rocks have been intruded by granitic rocks in the vicinity of the Alex Este mine. Scheelite and hematite mineralization is developed in a skarn adjacent to the intrusive contact.

Bennett, May 1973

The June Ellen mine is located on a northeast-trending normal fault in metavolcanic rocks of Triassic-Jurassic age.

The Utopian mine is situated in metamorphic rocks of Mesozoic age. Chalcopyrite, azurite, and malachite are present on the dumps of this property.

Autunite(?) reportedly occurs along a small breccia zone in granitic rocks at the uranium prospect (2).

POTENTIAL FOR DEVELOPMENT

Although there are numerous prospects and inactive mines in the area, the potential for production from these properties per se is generally remote. For the area as a whole, however, the potential for the discovery of economic ore is considerably greater. Favorable geology, manifested in the extensive occurrence of basement rocks at the surface and at shallow depths, and numerous "showings" of mineralization throughout the area suggests that significant ore deposits may be present which heretofore have not been discovered. The geology is "right" for the occurrence of a low-grade copper deposit and concealed basement rocks will be likely exploration targets in the future.

Past mining activities have pockmarked the area with prospect pits, shafts, and adits. Should a large disseminated ore deposit be discovered, it would probably be worked by open pit methods.

The uranium prospect is probably not of economic interest.

COMPANIES AND CLAIMANTS ACTIVE IN AREA

- | | | |
|---|---|--|
| 1. JULIETTA
E.S. Roberts, et.al.
Wagonwheel Saloon
Stateline, Nev.
(lode claims) | 2. BSW Group
Bear Creek Mining Co.
East 7821 Sprague
Spokane, Wash.
1970-72
(43 lode claims) | 3. BLUE BIRD Group
R.L. Gerish
Dec. 1966
(55 lode claims) |
| 4. PINE Group
USSRAM Exploration Co.
136 E. South Tempe
Salt Lake City, Utah
1966, 1967
(240+ lode claims) | 5. IRON NUGGET
E.A. Haglund, et.al.
217 N. Iris
Carson City, Nev.
(placer, millsite) | 6. MAGNET
V. Modarelli
1269 Valley View
Carson City, Nev.
June 1965
(lode claim) |
| 7. NEW DEAL #1
Charles Reay Sr.
1820 Helena Ave.
Sacramento, Calif.
(lode claim)
July 1967 | 8. ANNEX Group
E.A. Haglund, et.al.
217 N. Iris
Carson City, Nev.
1956, 1960-61, 1967
(40 lode claims) | 9. GREEN FIRE COPPER Group
Robert Egner
P.O. Box 629
Glendale, Calif.
July 1968
(2 lode claims) |

Bennett, May 1973

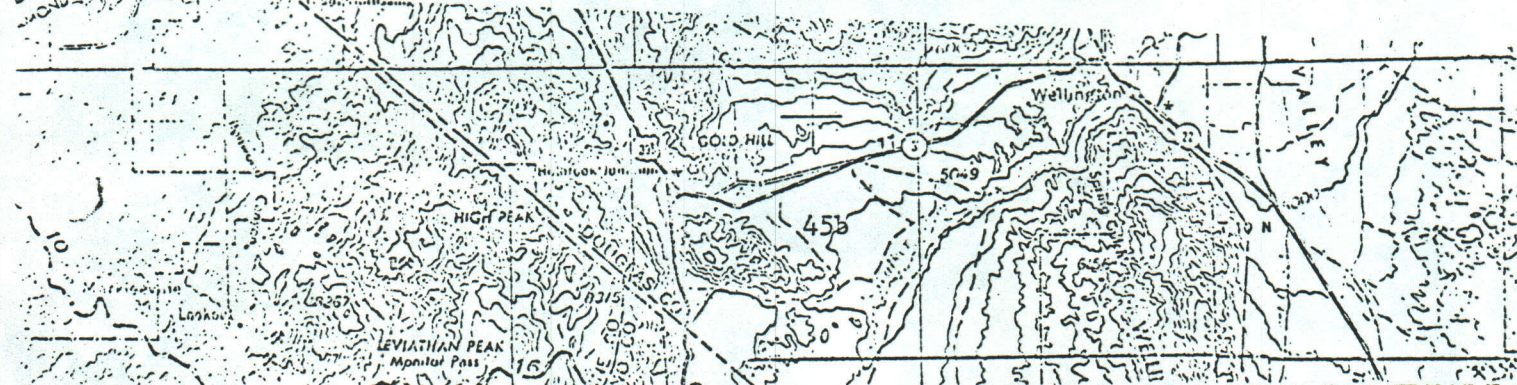
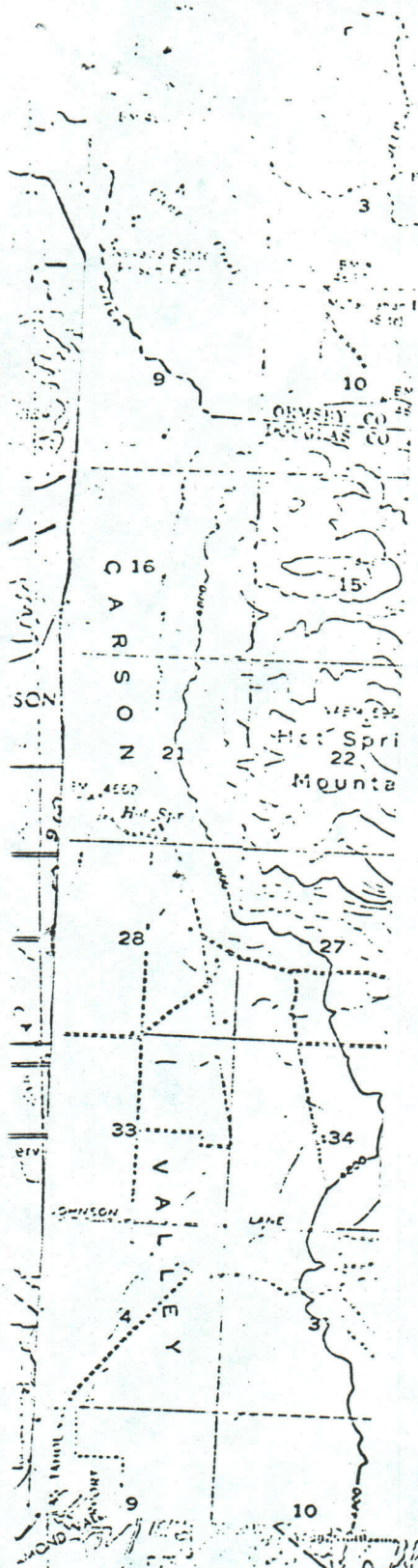
- | | | |
|---|---|--|
| <p>10. NEZ PERCE
W. S. Hillman
1701 Vernier
Concord, Calif.
Oct. 1965
(lode claim)</p> | <p>11. COPPER KING Group
M. Darby
1980 Spanish Spring Rd.
Sparks, Nev.
(7 lode claims)</p> | <p>12. HIDDEN SMILE
Jack E. Brazo
P.O. Box 426
Reno, Nev.
Jun. 1961
(4 lode claims)</p> |
| <p>13. GARNET Group
E.A. Hauglund, et.al.
217 N. Iris
Carson City, Nev.
1960-62
(9 lode claims)</p> | <p>14. GREEN FIRE GROUP
Robert Egner
P.O. Box 629
Glendale, Calif.
1967-1971
(53 lode claims)</p> | <p>15. KANE Group
J. Smith
2085 Plumas
(17 lode claims)</p> |
| <p>16. BAY Group
Phelps Dodge Corp.
(90 lode claims)</p> | <p>17. LAURA B Group
Steve Bazor
1102 Wilkinson
Reno, Calif.
Sept. 1962
(20 lode claims)</p> | <p>18. AG Group
Mineral Expl. Co.
1708 W. Grant
Tucson, Ariz.
Nov. 1970
(54 lode claims)</p> |
| <p>19. TIM Group
Toiyabe Expl. Co.
P.O. Box 993
Yerington, Nev.
Dec. 1971
(64 lode claims)</p> | <p>20. FEY Group
Minchel Mapa
P. O. Box 539
Yerington, Nev.
Mar. 1972
(23 lode claims)</p> | |

SELECTED REFERENCES

1. Moore: Geology and Mineral Deposits of Lyon, Douglas, and Ormsby Counties, Nevada; Nev. Bur. Mines Bull. 75, 1969.
(includes Geologic Map of area)
2. U.S. AEC: Reports of Uranium Investigations, 1955 (unpublished).

FIELD EXAMINATION

Bennett, May 1973



Taken from:

Mineral Resources Inventory and Analysis
of the
Pine Nut Planning Unit

Carson City District
Nevada and California

By
R. E. Bennett

1973

see Douglas County - general

Item 15

*for preface & general
background information*